

BASS RIVER TOWNSHIP SCHOOL DISTRICT

New Gretna, New Jersey
County of Burlington

**ANNUAL COMPREHENSIVE FINANCIAL REPORT
YEAR ENDED JUNE 30, 2025**

**ANNUAL COMPREHENSIVE FINANCIAL REPORT
OF THE
BASS RIVER TOWNSHIP SCHOOL DISTRICT
NEW GRETN, NEW JERSEY**

YEAR ENDED JUNE 30, 2025

**PREPARED BY DISTRICT FINANCE OFFICER
SCHOOL BUSINESS ADMINISTRATOR/BOARD SECRETARY**

This page intentionally left blank

TABLE OF CONTENTS

	PAGE
INTRODUCTORY SECTION (First Section)	
Letter of Transmittal	1
Organizational Chart	5
Roster of Officials	6
Consultants and Advisors	7
FINANCIAL SECTION (Second Section)	
Independent Auditor's Report	11
REQUIRED SUPPLEMENTARY INFORMATION – PART I	
Management's Discussion and Analysis	17
BASIC FINANCIAL STATEMENTS	
A. Government-Wide Financial Statements:	
A-1 Statement of Net Position	27
A-2 Statement of Activities	28
B. Fund Financial Statements:	
B-1 Balance Sheet	33
B-2 Statement of Revenues, Expenditures and Changes in Fund Balances	34
B-3 Reconciliation of the Statement of Revenues, Expenditures and Changes in Fund Balances of Governmental Funds to the Statement of Activities	35
Proprietary Funds:	
B-4 Statement of Net Position	N/A
B-5 Statement of Revenues, Expenditures and Changes in Fund Net Position	N/A
B-6 Statement of Cash Flows	N/A
Fiduciary Funds:	
B-7 Statement of Fiduciary Net Position	N/A
B-8 Statement of Changes in Fiduciary Net Position	N/A
Notes to Financial Statements	39
REQUIRED SUPPLEMENTARY INFORMATION – PART II	
C. Budgetary Comparison Schedules	
C-1 Budgetary Comparison Schedule – General Fund	65
C-2 Budgetary Comparison Schedule – Special Revenue Fund	N/A
Notes to the Required Supplementary Information - Part II	
C-3 Budget-to-GAAP Reconciliation	71
REQUIRED SUPPLEMENTARY INFORMATION – PART III	
L. Schedules Related to Accounting and Reporting for Pensions (GASB 68)	
L-1 Schedule of the District's Proportionate Share of the Net Pension Liability - PERS	77
L-2 Schedule of the School District Contributions - PERS	78
L-3 Schedule of the District's Proportionate Share of the Net Pension Liability - TPAF	79

TABLE OF CONTENTS

	PAGE
M. Schedules Related to Accounting and Reporting for Other Post Employment Benefits (GASB 75)	
M-1 Schedule of Changes in the Net OPEB Liability and Related Ratios - OPEB	83
Notes to the Required Supplementary Information - Part III	87
OTHER SUPPLEMENTARY INFORMATION	
D. School Based Budget Schedules Fund (if applicable):	
D-1 Combining Balance Sheet	N/A
D-2 Blended Resource Fund - Schedule of Expenditures Allocated by Resource Type - Actual	N/A
D-3 Blended Resource Fund - Schedule of Blended Expenditures - Budget and Actual	N/A
E. Special Revenue Fund:	
E-1 Combining Schedule of Program Revenues & Expenditures - Special Revenue Fund – Budgetary Basis	N/A
E-2 Preschool Education Aid Schedule(s) of Expenditures - Budgetary Basis	N/A
F. Capital Projects Fund:	
F-1 Summary Schedule of Project Expenditures	N/A
F-2 Summary Schedule of Revenues, Expenditures and Changes in Fund Balance – Budgetary Basis	N/A
F-2a Summary Schedule of Revenues, Expenditures and Changes in Fund Balance – Budgetary Basis Energy Saving Improvement Plan	N/A
G. Proprietary Funds:	
Enterprise Fund:	
G-1 Combining Schedule of Net Position	N/A
G-2 Combining Schedule of Revenues, Expenses & Changes in in Fund Net Position	N/A
G-3 Combining Schedule of Cash Flows	N/A
Internal Service Fund –	
G-4 Combining Schedule of Net Position	N/A
G-5 Combining Schedule of Revenues, Expenses & Changes in Fund Net Position	N/A
G-6 Combining Schedule of Cash Flows	N/A
H. Fiduciary Funds:	
H-1 Combining Statement of Fiduciary Net Position	N/A
H-2 Combining Statement of Changes in Fiduciary Net Position	N/A
H-3 Student Activity Agency Fund - Schedule of Receipts & Disbursements	N/A
H-4 Payroll Agency Fund - Schedule of Receipts & Disbursements	N/A
H-5 Athletic Agency Fund - Schedule of Receipts and Disbursements	N/A
I. Long-Term Debt:	
I-1 Schedule of Serial Bonds Payable	N/A
I-2 Schedule of Obligations Under Capital Leases	N/A
I-3 Debt Service Fund - Budgetary Comparison Schedule	N/A
I-4 Schedule of Early Retirement Incentive Plan Loans Payable	N/A

TABLE OF CONTENTS

	PAGE
STATISTICAL SECTION (Unaudited)	
(Third Section)	
Financial Trends:	
J-1 Net Position by Component	95
J-2 Changes in Net Position	96
J-3 Fund Balances – Governmental Funds	98
J-4 Changes in Fund Balances – Governmental Funds	99
J-5 General Fund - Other Local Revenue by Source	100
Revenue Capacity:	
J-6 Assessed Value & Actual Value of Taxable Property	103
J-7 Direct and Overlapping Property Tax Rates	104
J-8 Principal Property Taxpayers	105
J-9 Property Tax Levies and Collections	106
Debt Capacity:	
J-10 Ratios of Outstanding Debt by Type	109
J-11 Ratios of Net General Bonded Debt Outstanding	110
J-12 Ratios of Overlapping Governmental Activities Debt	111
J-13 Legal Debt Margin Information	112
Demographic & Economic Information:	
J-14 Demographic & Economic Statistics	115
J-15 Principal Employers	116
Operating Information:	
J-16 Full-Time Equivalent District Employees by Function/Program	119
J-17 Operating Statistics	120
J-18 School Building Information	121
J-19 Schedule of Required Maintenance	122
J-20 Insurance Schedule	123

SINGLE AUDIT SECTION

(Fourth Section)

K-1 Independent Auditor's Report on Internal Control Over Financial Reporting and on Compliance and Other Matters Based on an Audit of Financial Statements Performed in Accordance With Government Auditing Standards	127
K-2 Independent Auditor's Report on Compliance for Each Major Program and on Internal Control Over Compliance in Accordance with New Jersey OMB Circular Letter 15-08	N/A
K-3 Schedule of Expenditures of Federal Awards, Schedule A	129
K-4 Schedule of Expenditures of State Financial Assistance, Schedule B	130
K-5 Notes to Schedules of Expenditures of Federal Awards and State Financial Assistance	131
K-6 Schedule of Findings and Questioned Costs	133
K-7 Summary Schedule of Prior Year Audit Findings	137

This page intentionally left blank

INTRODUCTORY SECTION

This page intentionally left blank

BASS RIVER TOWNSHIP ELEMENTARY SCHOOL

Business Office:
550 Barnegat Blvd. N
Barnegat, NJ 08005

Telephone (609) 698-5800

Katherine Van Tassel
*Business Administrator/
Board Secretary*

December 1, 2025

Honorable President and Members
of the Board of Education
Bass River Township School District
County of Burlington, New Jersey

Dear Board Members/Citizens:

The Annual Comprehensive Financial Report (ACFR) of the Bass River Township School District for the fiscal year ended June 30, 2025, is hereby submitted. Responsibility for both the accuracy of the data and completeness and fairness of the presentation, including all disclosures, rests with the management of the Bass River Township School District. To the best of our knowledge and belief, the data presented in this report is accurate in all material respects and is reported in a manner designed to present fairly, in all material respects, the respective financial position of the governmental activities, each major fund, and the aggregate remaining fund information of the district as of June 30, 2025, and the respective changes in financial position and cash flows, where applicable, thereof, for the year then ended in conformity with accounting principles generally accepted in the United States of America. All disclosures necessary to enable the reader to gain an understanding of the district's financial activities have been included.

GAAP requires that management provide a narrative introduction, overview and analysis to accompany the basic financial statements in the form of Management Discussion and Analysis (MD&A). This letter of transmittal is designed to complement the MD&A and should be read in conjunction with it. The MD&A can be found immediately following the report of the independent auditors.

The Annual Comprehensive Financial Report is presented in four sections as follows:

Introductory Section:

Section contains a Letter of Transmittal, Roster of Officials, Consultants and Advisors, and an Organizational Chart.

Financial Section:

Section contains the Independent Auditors' Report and includes the Management's Discussion and Analysis, the Basic Financial Statements, Required Supplementary Information (RSI) and Other Supplementary Information.

Statistical Section:

Section contains selected financial trends, revenue and debt capacity, demographic, economic and other operating information, generally presented on a multi-year basis.

Single Audit Section:

The School District is required to undergo an annual Single Audit in conformity with the provisions of Title 2 U.S. Code of Federal Regulations Part 200, *Uniform Administrative Requirements, Cost Principles, and Audit Requirements for Federal Awards (Uniform Guidance)* and New Jersey OMB’s Circular 15-08 OMB, “*Single Audit Policy for Recipients of Federal Grants, State Grants and State Aid*”. Information related to this Single Audit, including the independent auditor’s report on the internal control and compliance with applicable laws, regulations, contracts and grants, along with findings and questioned costs, if any, are included in the Single Audit Section of this report.

REPORTING ENTITY AND ITS SERVICES

The Bass River Township School District is an independent reporting entity within the criteria adopted by the Governmental Accounting Standard Board (GASB) as established by NCGA Statement No. 3. All funds of the School District are included in this report. The School District has no component units.

The School District is a non-operating send/receive district. The School District sends students various Pre-K through 6 schools for regular and special education. The School District’s enrollment, as of October 15th, for the current and past nine fiscal years are detailed below.

AVERAGE DAILY ENROLLMENT
(TEN-YEAR HISTORY)

<u>FISCAL YEAR</u>	<u>ENROLLMENT</u>
2015-16	111
2016-17	102
2017-18	110
2018-19	100.03
2019-20	93
2020-21	63
2021-22	83
2022-23	105
2023-24	103
2024-25	104

ECONOMIC CONDITION AND OUTLOOK

Based on current trends, the economic condition for the area appears stable. The housing market indicates as light increase after years of decline. A major impact on the school financial condition remains reliant on State Aid. The district in 2024-2025 school year saw a slight increase to their State Aid and expects that to continue. As indicated, while the district is a non-operating district, State Aid is necessary to meet is obligations for tuition and transportation to the sending district. The district has a slight increase to their number of enrolled students, including special education.

MAJOR INITIATIVES

The 2024-2025 school year marked another year of significant changes for Bass River School District. All students in grades Pre-K through sixth grade continue to attend the Little Egg Harbor School District as part of a send/receive relationship. The district has several obligations for Aid – in - Lieu students and choice students in addition to the tuition to Little Egg Harbor School District. The District sold the building and continues to find efficiencies with our send/receive relationship.

INTERNAL ACCOUNTING CONTROLS

Management of the School District is responsible for establishing and maintaining an internal control structure designed to ensure that the assets of the district are protected from loss, theft and misuse and to ensure that adequate accounting data are completed to allow for the preparation of financial statement in conformity with general accepted accounting principles (GAAP). The internal control structure is designed to provide reasonable, but not absolute, assurance that these objectives are met. The concept of reasonable assurance recognizes that (1) the cost of a control should not exceed the benefits likely to be delivered; and (2) the valuation of costs and benefits require estimates and judgments by management.

As a recipient of federal and state financial assistance, the district also is responsible for ensuring that an adequate internal control structure is in place to ensure compliance with applicable laws and regulations related to those programs. This internal control structure is also subject to periodic evaluations by the district management.

As part of the School District's single audit described earlier, tests are made to determine the adequacy of the internal control structure, including that portion related to federal and state financial assistance programs, as well as to determine that the district has complied with applicable laws and regulations.

BUDGETARY CONTROLS

In addition to internal accounting controls, the School District maintains budgetary controls. The objective of these budgetary controls is to ensure compliance with legal provisions embodied in the annual appropriated budget approved by the voters of the municipality. Annual appropriated budgets are adopted for the general fund, the special revenue fund, and the debt service fund. Project-length budgets are approved for the capital improvements accounted for in the capital projects fund. The final budget amount as amended for the fiscal year is reflected in the financial section. An encumbrance accounting system is used to record outstanding purchase commitments on a line item basis. Open encumbrances at year-end are either cancelled or included as re-appropriations of fund balance in the subsequent year.

ACCOUNTING SYSTEM AND REPORTS

The School District's accounting records reflect generally accepted accounting principles, as promulgated by the Governmental Accounting Standards Board (GASB). The School District's accounting system is organized on the basis of funds. The funds are explained in "Notes to Financial Statements", Note 1.

OTHER INFORMATION

INDEPENDENT AUDIT

State statutes require an annual audit by independent certified public accountants. The accounting firm of Holman Frenia Allison, P.C., Certified Public Accounts, was appointed by the Board of Education. In addition to meeting the requirements set forth in the State statutes, the audit was also designed to meet the requirements of New Jersey OMB's Circular 15-08, *Single Audit Policy for Recipients of Federal Grants, State Grants and State Aid*. The auditor's report on the basic financial statements and combining statements and related major fund supporting statements and schedules is included in the financial section of this report. The auditor's reports related specifically to the single audit are included in the Single Audit section of this report.

ACKNOWLEDGEMENTS

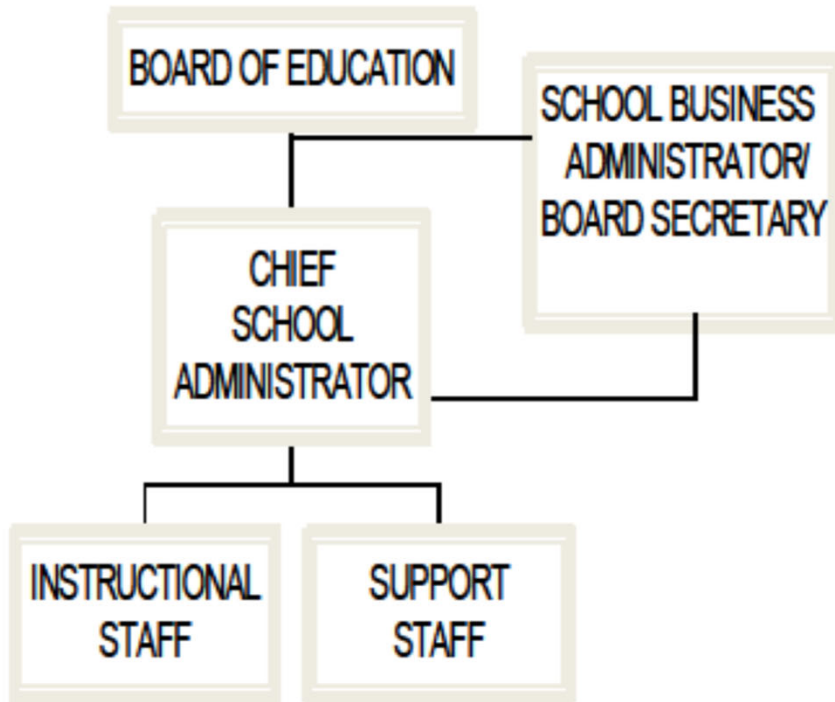
We would like to express our appreciation to the members of the Board of Education for their concern in providing fiscal accountability to the citizens and taxpayers of the School District and thereby contributing their full support to the development and maintenance of our financial operation. The preparation of this report could not have accomplished without the efficient and dedicated services of our business office staff.

Respectfully submitted,

Kate Van Tassel

Kate Van Tassel
School Business Administrator/Board Secretary

**BASS RIVER TOWNSHIP SCHOOL DISTRICT
NEW GRETN, NEW JERSEY
ORGANIZATIONAL CHART
JUNE 30, 2025**



**BASS RIVER TOWNSHIP SCHOOL DISTRICT
NEW GRETNA, NEW JERSEY
ROSTER OF OFFICIALS
JUNE 30, 2025**

Members of the Board of Education

TERM EXPIRES

Karl Swanseen, President

2025

William Curtin, Vice President

2025

Timothy Bush

2026

Other Officials

Katherine Van Tassel, School Business Administrator/Board Secretary

Kelly Righter, Treasurer of School Monies

Mark Tabakin, Board Attorney

**BASS RIVER TOWNSHIP SCHOOL DISTRICT
NEW GRETNA, NEW JERSEY
CONSULTANTS AND ADVISORS
JUNE 30, 2025**

AUDITOR/AUDIT FIRM

Jerry W. Conaty, CPA, PSA, CFE, RMA
Holman Frenia Allison, P. C.
1985 Cedar Bridge Avenue
Suite 3
Lakewood, New Jersey 08701

ATTORNEY

Mark A. Tabakin
Weiner Law Group
629 Parsippany Road
Parsippany, New Jersey 07054

OFFICIAL DEPOSITORY

Ocean First Bank
975 Hooper Avenue
Toms River, New Jersey 08753

This page intentionally left blank

FINANCIAL SECTION

Second Section

This page intentionally left blank



INDEPENDENT AUDITOR'S REPORT

Honorable President and Members
of the Board of Education
Bass River Township School District
County of Burlington
New Gretna, NJ 08224

Report on the Audit of the Financial Statements

We have audited the accompanying financial statements of the governmental activities, each major fund and the aggregate remaining fund information of the Bass River Township School District (hereafter referred to as the School District), County of Burlington, State of New Jersey, as of and for the fiscal year ended, June 30, 2025, and the related notes to the financial statements, which collectively comprise the School District's basic financial statements as listed in the table of contents.

In our opinion, the financial statements referred to above present fairly, in all material respects, the respective financial position of the governmental activities, each major fund and the aggregate remaining fund information of the School District as of June 30, 2025, and the respective changes in financial position and, where applicable, cash flows thereof for the year then ended in accordance with accounting principles generally accepted in the United States of America.

Basis for Opinion

We conducted our audit in accordance with auditing standards generally accepted in the United States of America and the standards applicable to financial audits contained in *Government Auditing Standards*, issued by the Comptroller General of the United States; and in compliance with audit requirements prescribed by the Office of School Finance, Department of Education, State of New Jersey. Our responsibilities under those standards are further described in the Auditor's Responsibilities for the Audit of the Financial Statements section of our report. We are required to be independent of the School District and to meet our other ethical responsibilities, in accordance with the relevant ethical requirements relating to our audit. We believe that the audit evidence we have obtained is sufficient and appropriate to provide a basis for our audit opinion.

Responsibilities of Management for the Financial Statements

Management is responsible for the preparation and fair presentation of these financial statements in accordance with accounting principles generally accepted in the United States of America; this includes the design, implementation, and maintenance of internal control relevant to the preparation and fair presentation of financial statements that are free from material misstatement, whether due to fraud or error.

In preparing the financial statements, management is required to evaluate whether there are conditions or events, considered in the aggregate, that raise substantial doubt about the School District ability to continue as a going concern for twelve months beyond the financial statement date, including any currently known information that may raise substantial doubt shortly thereafter.

Auditor's Responsibility

Our objectives are to obtain reasonable assurance about whether the financial statements as a whole are free from material misstatement, whether due to fraud or error, and to issue an auditor's report that includes our opinion. Reasonable assurance is a high level of assurance but is not absolute assurance and therefore is not a guarantee that an audit conducted in accordance with generally accepted auditing standards, *Government Auditing Standards*, and audit requirements prescribed by the Office of School Finance, Department of Education, State of New Jersey will always detect a material misstatement when it exists. The risk of not detecting a material misstatement resulting from fraud is higher than for one resulting from error, as fraud may involve collusion, forgery, intentional omissions, misrepresentations, or the override of internal control. Misstatements are considered material if there is a substantial likelihood that, individually or in the aggregate, they would influence the judgment made by a reasonable user based on the financial statements.

In performing an audit in accordance with generally accepted auditing standards, *Government Auditing Standards* and audit requirements prescribed by the Office of School Finance, Department of Education, State of New Jersey, we:

- Exercise professional judgment and maintain professional skepticism throughout the audit.
- Identify and assess the risks of material misstatement of the financial statements, whether due to fraud or error, and design and perform audit procedures responsive to those risks. Such procedures include examining, on a test basis, evidence regarding the amounts and disclosures in the financial statements.
- Obtain an understanding of internal control relevant to the audit in order to design audit procedures that are appropriate in the circumstances, but not for the purpose of expressing an opinion on the effectiveness of the School District's internal control. Accordingly, no such opinion is expressed.
- Evaluate the appropriateness of accounting policies used and the reasonableness of significant accounting estimates made by management, as well as evaluate the overall presentation of the financial statements.
- Conclude whether, in our judgment, there are conditions or events, considered in the aggregate, that raise substantial doubt about the School District's ability to continue as a going concern for a reasonable period of time.

We are required to communicate with those charged with governance regarding, among other matters, the planned scope and timing of the audit, significant audit findings, and certain internal control-related matters that we identified during the audit.

Required Supplementary Information

Accounting principles generally accepted in the United States of America require that the management's discussion and analysis, budgetary comparison information, and the schedules related to accounting and reporting for pensions and other post employment benefits, as listed in the table of contents be presented to supplement the basic financial statements. Such information, although not a part of the basic financial statements, is required by the Governmental Accounting Standards Board who considers it to be an essential part of financial reporting for placing the basic financial statements in an appropriate operational, economic, or historical context. We have applied certain limited procedures to the required supplementary information in accordance with auditing standards generally accepted in the United States of America, which consisted of inquiries of management about the methods of preparing the information and comparing the information for consistency with management's responses to our inquiries, the basic financial statements, and other knowledge we obtained during our audit of the basic financial statements. We do not express an opinion or provide any assurance on the information because the limited procedures do not provide us with sufficient evidence to express an opinion or provide any assurance.

Supplementary Information

Our audit was conducted for the purpose of forming opinions on the financial statements that collectively comprise the School District's basic financial statements. The introductory section, combining statements and related major fund supporting statements and schedules, statistical section and schedules of expenditures of federal awards and state financial assistance are presented for purposes of additional analysis, as required by the Division of Administration and Finance, Department of Education, State of New Jersey, and are not a required part of the basic financial statements.

Such information is the responsibility of management and was derived from and relates directly to the underlying accounting and other records used to prepare the basic financial statements. The information has been subjected to the auditing procedures applied in the audit of the basic financial statements and certain additional procedures, including comparing and reconciling such information directly to the underlying accounting and other records used to prepare the basic financial statements or to the basic financial statements themselves, and other additional procedures in accordance with auditing standards generally accepted in the United States of America. In our opinion, the accompanying combining statements and related major fund supporting statements and schedules and schedules of expenditures of federal awards and state financial assistance are fairly stated, in all material respects, in relation to the basic financial statements as a whole.

Other Information

Management is responsible for the other information included in the annual report. The other information comprises the introductory and statistical sections but does not include the basic financial statements and our auditor's report thereon. Our opinions on the basic financial statements do not cover the other information, and we do not express an opinion or any form of assurance thereon.

In connection with our audit of the basic financial statements, our responsibility is to read the other information and consider whether a material inconsistency exists between the other information and the basic financial statements, or the other information otherwise appears to be materially misstated. If, based on the work performed, we conclude that an uncorrected material misstatement of the other information exists, we are required to describe it in our report.

Other Reporting Required by *Government Auditing Standards*

In accordance with *Government Auditing Standards*, we have also issued our report dated December 1, 2025 on our consideration of the School District's internal control over financial reporting and on our tests of its compliance with certain provisions of laws, regulations, contracts, and grant agreements and other matters. The purpose of that report is to describe the scope of our testing of internal control over financial reporting and compliance and the results of that testing, and not to provide an opinion on internal control over financial reporting or on compliance. That report is an integral part of an audit performed in accordance with *Government Auditing Standards* in considering the School District's internal control over financial reporting and compliance.

Respectfully Submitted,

HOLMAN FRENIA ALLISON, P.C.

A handwritten signature in black ink, appearing to read 'Jerry W. Conaty', with a stylized, overlapping flourish at the end.

Jerry W. Conaty
Certified Public Accountant
Public School Accountant, No. 2470

Lakewood, New Jersey
December 1, 2025

REQUIRED SUPPLEMENTARY INFORMATION - PART I

Management's Discussion and Analysis

This page intentionally left blank

BASS RIVER TOWNSHIP SCHOOL DISTRICT
MANAGEMENT'S DISCUSSION AND ANALYSIS
YEAR ENDED JUNE 30, 2025
UNAUDITED

This section of the Bass River Township School District Board of Education's Annual Comprehensive Financial Report presents our discussion and analysis of the District's financial performance during the fiscal year that ended on June 30, 2025. Please read it in conjunction with the transmittal letter at the front of this report and the District's financial statements, which immediately follow this section.

Management's Discussion and Analysis (MD&A) is an element of Required Supplementary Information specified in the Governmental Accounting Standards Board's (GASB) Statement No. 34 - Basic Financial Statements-Management's Discussion and Analysis-for State and Local Governments issued in June 1999 that is also required by the New Jersey State Department of Education. Certain comparative information between the current fiscal year 2024-2025 and the prior fiscal year 2023-2024 is required to be presented in the MD&A.

FINANCIAL HIGHLIGHTS

Key financial highlights for 2025 are as follows:

- In total, net position of governmental activities decreased (\$142,956.65), which represents a (11.52%) decrease from 2024.
- General revenues accounted for \$1,581,409.29 in revenue or 100.00% of all revenues.
- Total assets of governmental activities decreased by (\$238,096.53) as unrestricted cash and cash equivalents decreased by (\$196,582.58), restricted cash and cash equivalents decreased by (\$41,154.95), receivables decreased by (\$359.00)
- Total liabilities of governmental activities increased by \$11,045.12
- The District had \$1,724,365.94 in governmental activity expenses. General revenues from governmental activities (primarily property taxes) of \$1,581,409.29 and extraordinary items of \$. were adequate to provide for these programs, resulting in a decrease in net position for governmental activities of (\$142,956.65).
- In the governmental funds, the general fund had \$1,581,409.29 in revenues and \$1,830,550.94 in expenditures. The general fund's fund balance decreased by (\$249,141.65) over 2024.

USING THIS ANNUAL COMPREHENSIVE FINANCIAL REPORT (ACFR)

This annual report consists of a series of financial statements and notes to these financial statements. These statements are organized in a way to allow the reader to understand the Bass River Township School District Board of Education as a financial whole, an entire operating entity. The statements then proceed to provide an increasingly detailed look at specific financial activities.

This discussion and analysis is intended to serve as an introduction to the District's basic financial statements. The District's basic financial statements are comprised of three components: 1) Government-wide financial statements, 2) Fund financial statements, and 3) Notes to the financial statements. This report also contains required supplementary information and other supplementary information in addition to the basic financial statements themselves.

USING THIS ANNUAL COMPREHENSIVE FINANCIAL REPORT (ACFR)

Government-Wide Financial Statements. The government-wide financial statements are designed to provide readers with an overview of the District's finances, in a manner similar to a private-sector business.

The Statement of Net Position (A-1) presents information on the difference between assets plus deferred outflows of resources and liabilities plus deferred inflows of resources reported as net position. Over time, increases or decreases in net position may serve as a useful indicator of whether the financial position of the District is improving or deteriorating.

The Statement of Changes in Net Position (A-2) presents information showing how the net position of the District changed during the most recent fiscal year. All changes in net position are reported as soon as the underlying event giving rise to the change occurs, regardless of the timing of related cash flows. Thus, revenues and expenses are reported in this statement for some items that will only result in cash flows in future fiscal periods of the district.

The government-wide financial statements can be found as Exhibits A-1 and A-2 in this report.

Fund Financial Statements. A fund is a group of related accounts that is used to maintain control over resources that have been segregated for specific activities or objectives. The District, like other state and local governments, uses fund accounting to ensure and demonstrate compliance with finance-related legal requirements. All of the funds of the District can be divided into three categories: governmental funds, proprietary funds and fiduciary funds.

Governmental Funds

Governmental funds are used to account for essentially the same functions reported as governmental activities in the government-wide financial statements. However, unlike the government-wide financial statements, governmental fund financial statements focus on the near-term inflows and outflows of spendable resources, as well as on balances of spendable resources available at the end of the fiscal year. Such information may be useful in evaluating the District's near-term financing requirements.

Because the focus of governmental funds is narrower than that of the government-wide financial statements, it is useful to compare the information presented for governmental funds with similar information presented for governmental activities in the government-wide financial statements. By doing so, readers may better understand the long-term impact of the District's near-term financing decisions. Both the governmental fund balance sheet and the governmental fund statement of revenues, expenditures, and changes in fund balance provide a reconciliation to facilitate this comparison between governmental funds and governmental activities.

The District maintains three individual governmental funds. Information is presented separately in the governmental fund balance sheet and the governmental fund statement of revenues, expenditures and changes in fund balance for the general fund, special revenue fund, and capital projects fund, all of which are considered to be major funds.

The District maintains three individual governmental funds. Information is presented separately in the governmental fund balance sheet and the governmental fund statement of revenues, expenditures and changes in fund balance for the general fund, special revenue fund, and capital projects fund, all of which are considered to be major funds.

The general and special revenue funds utilize a legally adopted annual budget. A budgetary comparison statement has been provided for the general fund and special revenue fund to demonstrate compliance with this budget.

The basic governmental fund financial statements can be found as Exhibits B-1 through B-3 in this report.

Notes to the Financial Statements. The notes provide additional information that is essential for a full understanding of the data provided in the district-wide and fund financial statements. The notes to the financial statements can be found after the fund financial statements in this report.

Government-Wide Financial Analysis

The District’s financial position is the result of several types of financial transactions, including the net results of activities, the acquisition and payment of debt, the acquisition and disposal of capital assets, and the depreciation of capital assets.

As noted earlier, net position may serve over time as a useful indicator of the District’s financial position. The following table provides a summary of net position for June 30, 2025 and 2024, respectively:

	Net Position	
	June 30, 2025	
	Governmental Activities	
	<u>2025</u>	<u>2024</u>
Assets		
Current and Other		
Assets	\$ 1,313,486.81	\$ 1,617,369.23
Total Assets	<u>1,313,486.81</u>	<u>1,617,369.23</u>
Deferred Outflows of Resources		
Deferred Outflows		
Relating to Pension	-	31,553.00
Total Deferred Outflows of Resources	<u>-</u>	<u>31,553.00</u>
Liabilities		
Other Liabilities	11,208.63	-
Total Liabilities	<u>11,208.63</u>	<u>-</u>
Deferred Inflows of Resources		
Deferred Inflows		
Relating to Pension	203,786.00	430,175.00
Total Deferred Inflows of Resources	<u>203,786.00</u>	<u>430,175.00</u>
Net Position		
Restricted	1,075,925.18	1,414,649.00
Unrestricted	22,567.00	(195,901.77)
Total Net Position	<u>\$ 1,098,492.18</u>	<u>\$ 1,218,747.23</u>

The District’s largest net position component is the Restricted portion as shown above. Restricted balances represent resources that are subject to external restrictions on how they may be used.

Restricted net position decreased (\$338,723.82) from the prior year to \$1,075,925.18 at June 30, 2025.

Unrestricted net position may be used to meet the District's ongoing operating obligations to vendors, debtors and employees. The unrestricted net position includes the unassigned General Fund balance netted with the amount of long-term obligations that are not invested in capital assets. The \$22,567. is shown as unrestricted net position for Governmental Activities.

The following table provides a summary of revenues and expenses for the District’s governmental and business-type activities and the change in net position for June 30, 2025 and 2024. Significant variances in revenues and expenditures from year to year, and explanations thereof, are detailed in the ‘Financial Analysis of the District’s Funds’ section later in this report.

June 30, 2025

	<u>Governmental Activities</u>	<u>Total</u>
Revenues:		
General Revenues:		
Property Taxes	\$ 1,078,022.00	\$ 1,078,022.00
Federal and State Aid	494,846.00	494,846.00
Miscellaneous	8,541.29	8,541.29
Total Revenues	1,581,409.29	1,581,409.29
Expenses:		
Support Services	1,724,365.94	1,724,365.94
Total Expenses	1,724,365.94	1,724,365.94
Change in Net Position	(142,956.65)	(142,956.65)
Net Position, Beginning	1,241,448.83	1,241,448.83
Net Position, Ending	\$ 1,098,492.18	\$ 1,098,492.18

June 30, 2024

	<u>Governmental Activities</u>	<u>Total</u>
Revenues:		
General Revenues:		
Property Taxes	\$ 1,056,884.00	\$ 1,056,884.00
Federal and State Aid	618,671.00	618,671.00
Miscellaneous	7,919.11	7,919.11
Total Revenues	1,683,474.11	1,683,474.11
Expenses:		
Support Services	1,660,772.51	1,660,772.51
Total Expenses	1,660,772.51	1,660,772.51
Change in Net Position	22,701.60	22,701.60
Net Position, Beginning	1,218,747.23	1,218,747.23
Net Position, Ending	\$ 1,241,448.83	\$ 1,241,448.83

Financial Analysis of the District's Funds

As noted earlier, the District uses fund accounting to ensure and demonstrate compliance with finance-related legal requirements.

Governmental Funds. The focus of the District's governmental funds is to provide information on near-term inflows, outflows, and balances of spendable resources. Such information is useful in assessing the District's financing requirements. The unassigned fund balance is divided between designated balances and undesignated balances. The capital projects fund is restricted by state law to be spent for the purpose of the fund and is not available for spending at the District's discretion.

Financial Information at Fiscal Year-End

The following schedule presents a summary of the general fund and special revenue fund expenditures for the fiscal year ended Jun 30, 2025 and 2024 and the amount and percentage of increases and (decreases) in relation to prior year expenditures.

	<u>June 30, 2025</u>			
	Amount	Percent Of Total	Increase (Decrease) From 2024	Percent of Increase (Decrease)
Current Expenditures:				
Undistributed	\$ 1,830,550.94	100.00%	\$ 81,127.43	4.64%
Total	<u>\$ 1,830,550.94</u>	<u>100.00%</u>	<u>\$ 81,127.43</u>	<u>4.64%</u>

	<u>June 30, 2024</u>			
	Amount	Percent Of Total	Increase (Decrease) From 2023	Percent of Increase (Decrease)
Current Expenditures:				
Undistributed	\$ 1,749,423.51	100.00%	\$ 246,737.55	16.42%
Total	<u>\$ 1,749,423.51</u>	<u>100.00%</u>	<u>\$ 246,737.55</u>	<u>16.42%</u>

General Fund Budgetary Highlights

Throughout the year, as necessary, budget transfers were effectuated between budget accounts to re-align the 2024-2025 budget. Budget transfers were effectuated based on expected positive and negative budget variances. The budget is continually managed and revised with budget transfers as necessary or practical to do so.

Significant Budget Transfers and Variations:

- TPAF, which is the state’s contribution to the pension fund, is an “on-behalf” revenue and expenditure item to the district and is required to be reflected in the financial statements.
- Transfers were made into purchased services for special education programs to provide funds for required additional services.

Capital Assets

At June 30, 2025 the District had no capital assets as they were all sold during the year ended June 30, 2023 in response to the District becoming a non-operating district.

Debt Administration and Other Obligations

At June 30, 2025 and 2024, The District had no financing obligations outstanding.

Additional information on the District's debt administration and other obligations can be found in Note 5 to the basic financial statements.

Economic Factors and Subsequent Year's Budgets

- The fiscal outlook in the near term is a concern for most school districts. The District is subject to the tax cap limitation of 2 percent. To continue essential government functions, the District became a non-operating district to consolidate the duplication of services. The Bass River Township School District will continue to employ prudent and responsible fiscal practices to maintain its sound financial condition.

Requests for Information

This financial report is designed to provide a general overview of the Bass River School District's finances for all those with an interest in the District's finances. Questions concerning any of the information provided in this report or requests for additional financial information should be addressed to the Business Administrator/Board Secretary's Office at the Bass River Township School District, 11 N. Maple Ave, New Gretna, New Jersey 08224. Readers may also visit the website at www.bassriverschools.org.

BASIC FINANCIAL STATEMENTS

This page intentionally left blank

A. Government-Wide Financial Statements

This page intentionally left blank

BASS RIVER TOWNSHIP SCHOOL DISTRICT
STATEMENT OF NET POSITION
JUNE 30, 2025

	GOVERNMENTAL ACTIVITIES	TOTAL
ASSETS:		
Cash & Cash Equivalents	\$ 712,944.95	\$ 712,944.95
Receivables, Net (Note 4)	3,736.00	3,736.00
Restricted Cash & Cash Equivalents	596,805.86	596,805.86
Total Assets	<u>1,313,486.81</u>	<u>1,313,486.81</u>
LIABILITIES:		
Accounts Payable	11,208.63	11,208.63
Total Liabilities	<u>11,208.63</u>	<u>11,208.63</u>
DEFERRED INFLOWS OF RESOURCES:		
Related to Pensions (Note 6)	203,786.00	203,786.00
Total Deferred Inflow of Resources	<u>203,786.00</u>	<u>203,786.00</u>
NET POSITION:		
Emergency Reserve (Note 3)	250,000.00	250,000.00
Tuition Reserve (Note 3)	338,800.00	338,800.00
Unemployment Claims (Note 3)	8,005.86	8,005.86
Excess Surplus (Note 14)	479,119.32	479,119.32
Unrestricted (Deficit)	<u>22,567.00</u>	<u>22,567.00</u>
Total Net Position	<u>\$ 1,098,492.18</u>	<u>\$ 1,098,492.18</u>

The accompanying Notes to Financial Statements are an integral part of this statement.

EXHIBIT A-2

BASS RIVER TOWNSHIP SCHOOL DISTRICT
STATEMENT OF ACTIVITIES
YEAR ENDED JUNE 30, 2025

<u>NET (EXPENSE) REVENUE AND CHANGES IN NET POSITION</u>	
<u>FUNCTIONS/PROGRAMS</u>	<u>EXPENSES</u>
	<u>GOVERNMENTAL ACTIVITIES</u>
	<u>TOTAL</u>
Governmental Activities:	
Support Services:	
Tuition	\$ 1,588,112.55
General Administrative	\$ (1,588,112.55)
Central Services	(15,003.59)
Plant Operations & Maintenance	(25,718.21)
Pupil Transportation	(4,861.04)
	<u>(90,670.55)</u>
Total Governmental Activities	<u>(1,724,365.94)</u>
Total Primary Government	<u>(1,724,365.94)</u>
General Revenues:	
Taxes:	
Property Taxes, Levied for General Purposes	1,078,022.00
Federal & State Aid Not Restricted	494,846.00
Miscellaneous	8,541.29
Total General Revenues	<u>1,581,409.29</u>
Change In Net Position	(142,956.65)
Net Position - Beginning	1,241,448.83
Net Position - Ending	<u>\$ 1,098,492.18</u>

B. Fund Financial Statements

This page intentionally left blank

Governmental Funds

This page intentionally left blank

**BASS RIVER TOWNSHIP SCHOOL DISTRICT
GOVERNMENTAL FUNDS
BALANCE SHEET
JUNE 30, 2025**

	MAJOR FUNDS	
	GENERAL FUND	TOTAL GOVERNMENTAL FUNDS
ASSETS		
Cash & Cash Equivalents	\$ 712,944.95	\$ 712,944.95
Due from Other Governments:		
State	3,736.00	3,736.00
Restricted Cash & Cash Equivalents	596,805.86	596,805.86
Total Assets	\$ 1,313,486.81	\$ 1,313,486.81
LIABILITIES & FUND BALANCES		
Liabilities:		
Accounts Payable	\$ 11,208.63	\$ 11,208.63
Total Liabilities	11,208.63	11,208.63
Fund Balances:		
Restricted for:		
Tuition Reserve	338,800.00	338,800.00
Emergency Reserve	250,000.00	250,000.00
Excess Surplus	282,291.32	282,291.32
Excess Surplus Designated for Subsequent Year	196,828.00	196,828.00
Unemployment Claims	8,005.86	8,005.86
Assigned to:		
Designated for Subsequent Year	933.00	933.00
Unassigned	225,420.00	225,420.00
Total Fund Balances	1,302,278.18	1,302,278.18
Total Liabilities & Fund Balances	\$ 1,313,486.81	
Amounts reported for <i>governmental activities</i> in the statement of net position (A-1) are different because:		
Deferred outflows and inflows of resources related to pensions and deferred charges or credits on debt refunding are applicable to future reporting periods and therefore are not reported in the funds.		
Deferred Inflows Related to Pensions		(203,786.00)
Net Position of Governmental Activities		\$ 1,098,492.18

The accompanying Notes to Financial Statements are an integral part of this statement.

**BASS RIVER TOWNSHIP SCHOOL DISTRICT
GOVERNMENTAL FUNDS
STATEMENT OF REVENUES, EXPENDITURES AND CHANGES IN FUND BALANCES
YEAR ENDED JUNE 30, 2025**

	MAJOR FUNDS	
	GENERAL FUND	TOTAL GOVERNMENTAL FUNDS
Revenues:		
Local Sources:		
Local Tax Levy	\$ 1,078,022.00	\$ 1,078,022.00
Miscellaneous	8,541.29	8,541.29
Total Local Sources	1,086,563.29	1,086,563.29
State Sources	494,846.00	494,846.00
Total Revenues	1,581,409.29	1,581,409.29
Expenditures:		
Support Services:		
Tuition	1,588,112.55	1,588,112.55
General Administrative	25,668.10	25,668.10
Central Services	43,998.65	43,998.65
Plant Operations & Maintenance	8,316.25	8,316.25
Pupil Transportation	155,118.93	155,118.93
Unallocated Benefits	9,336.46	9,336.46
Total Expenditures	1,830,550.94	1,830,550.94
Excess/(Deficiency) of Revenues Over Expenditures	(249,141.65)	(249,141.65)
Net Changes in Fund Balances	(249,141.65)	(249,141.65)
Fund Balance, July 1	1,551,419.83	1,551,419.83
Fund Balance, June 30	\$ 1,302,278.18	\$ 1,302,278.18

The accompanying Notes to Financial Statements are an integral part of this statement.

**BASS RIVER TOWNSHIP SCHOOL DISTRICT
 RECONCILIATION OF THE STATEMENT OF REVENUES, EXPENDITURES,
 AND CHANGES IN FUND BALANCES OF GOVERNMENTAL FUNDS
 TO THE STATEMENT OF ACTIVITIES
 YEAR ENDED JUNE 30, 2025**

Total Net Changes in Fund Balances - Governmental Funds (B-2)	\$ (249,141.65)
Amounts reported for governmental activities in the statement of activities (A-2) are different because:	
Governmental funds report School District pension contributions as expenditures. However in the statement of activities, the cost of pension benefits earned is reported as pension expense. This is the amount by which pension benefits earned exceeded the School District's pension contributions in the current period.	<u>106,185.00</u>
Change in Net Position of Governmental Activities	<u><u>\$ (142,956.65)</u></u>

This page intentionally left blank

BASS RIVER TOWNSHIP SCHOOL DISTRICT

**NOTES TO FINANCIAL STATEMENTS
JUNE 30, 2025**

This page intentionally left blank

**BASS RIVER TOWNSHIP SCHOOL DISTRICT
NOTES TO THE FINANCIAL STATEMENTS
YEAR ENDED JUNE 30, 2025**

Note 1. Summary of Significant Accounting Policies

Basis of Presentation

The financial statements of the Bass River Township Public School District (hereafter referred to as the “School District”) have been prepared in conformity with generally accepted accounting principles (GAAP) as prescribed by the Governmental Accounting Standards Board (GASB). The Governmental Accounting Standards Board (GASB) is responsible for establishing GAAP for state and local governments through its pronouncements (Statements and Interpretations).

Reporting Entity

The School District is a Type II district located in the County of Burlington, State of New Jersey. As a Type II district, the School District functions independently through a Board of Education. The Board is comprised of three members appointed to three-year terms. These terms are staggered so that two members’ terms expire in one year and one members term expires in the second. Beginning July 1, 2020, the School District converted to a non-operating district and entered into a send/receive relationship with the Little Egg Harbor School District. The School District sends all 104 of its students to other districts on a tuition basis.

The primary criterion for including activities within the School District’s reporting entity, as set forth in Section 2100 of the GASB *Codification of Governmental Accounting and Financial Reporting Standards* , is whether:

- ◆ the organization is legally separate (can sue or be sued in their own name);
- ◆ the School District holds the corporate powers of the organization;
- ◆ the School District appoints a voting majority of the organization’s board
- ◆ the School District is able to impose its will on the organization;
- ◆ the organization has the potential to impose a financial benefit/burden on the School District
- ◆ there is a fiscal dependency by the organization on the School District.

There were no additional entities required to be included in the reporting entity under the criteria as described above. Furthermore, the School District is not includable in any other reporting entity on the basis of such criteria.

Component Units

GASB Statement No.14. *The Financial Reporting Entity* , provides guidance that all entities associated with a primary government are potential component units and should be evaluated for inclusion in the financial reporting entity. A primary government is financially accountable not only for the organizations that make up its legal entity but also for legally separate organizations that meet the criteria established by GASB Statement No. 14, as amended by GASB Statement No. 39, *Determining Whether Certain Organizations are Component Units* , and GASB Statement No. 61, *The Financial Reporting Entity: Omnis – an Amendment of GASB Statements No. 14 and No. 34* , GASB Statement No. 80, *Blending Requirements for certain component Units - an Amendment of GASB Statement No. 14* and GASB Statement No. 97, *Certain Component Unit Criteria and Accounting and Financial Reporting for Internal Revenue Code Section 457 Deferred Compensation Plan- an Amendment of GASB Statements No. 14 and No. 84* . The School District had no component units as of for the year ended June 30, 2025.

**BASS RIVER TOWNSHIP SCHOOL DISTRICT
NOTES TO THE FINANCIAL STATEMENTS
YEAR ENDED JUNE 30, 2025 (Continued)**

Note 1. Summary of Significant Accounting Policies (Continued)

Basis of Accounting, Measurement Focus and Financial Statement Presentation

The accounts of the School District are organized on the basis of funds, each of which is considered a separate accounting entity. The operations of each fund are accounted for with a separate set of self-balancing accounts that comprise its assets, deferred outflows of resources, liabilities, deferred inflows of resources, fund equity, revenues, and expenditures or expenses, as appropriate. Governmental resources are allocated to and accounted for in individual funds based upon the purposes for which they are to be spent and the means by which spending activities are controlled.

A. Government-Wide Financial Statements

The School District's Government-Wide Financial Statements include a Statement of Net Position and a Statement of Activities. These statements present summaries of Governmental and Business-Type Activities for the School District accompanied by a total column. Fiduciary activities of the School District are not included in these statements.

These statements are presented on an "economic resources" measurement focus and the accrual basis of accounting. Accordingly, all of the School District's assets, deferred outflows of resources, liabilities, and deferred inflows of resources, including capital assets and long-term liabilities, are included in the Statement of Net Position. The Statement of Activities presents changes in net position. Under the accrual basis of accounting, revenues are recognized in the period in which they are earned while expenses are recognized in the period in which the liability is incurred, regardless of the timing of related cash flows. The types of transactions reported as program revenues for the School District are reported in three categories: 1) charges for services, 2) operating grants and contributions, and 3) capital grants and contributions. Internally dedicated resources are reported as general revenues rather than as program revenues. Likewise, general revenues include all property taxes.

Certain eliminations have been made to interfund activities, payables, and receivables. All internal balances in the Statement of Net Position have been eliminated except those representing balances between the governmental activities and the business-type activities, which are presented as internal balances and eliminated in the total primary government column. In the Statement of Activities, internal service fund transactions have been eliminated; however, those transactions between governmental and business-type activities have not been eliminated.

B. Governmental Fund Financial Statements

Governmental fund financial statements include a Balance Sheet and a Statement of Revenues, Expenditures and Changes in Fund Balances for all major governmental funds and non-major funds aggregated. The School District has presented all major funds that met those qualifications.

BASS RIVER TOWNSHIP SCHOOL DISTRICT
NOTES TO THE FINANCIAL STATEMENTS
YEAR ENDED JUNE 30, 2025 (Continued)

Note 1. Summary of Significant Accounting Policies (Continued)

All governmental funds are accounted for on a spending or “current financial resources” measurement focus and the modified accrual basis of accounting. Accordingly, only current assets and current liabilities are included on the Balance Sheets. (The School District’s deferred outflows of resources and deferred inflows of resources are noncurrent.) The Statement of Revenues, Expenditures and Changes in Fund Balances present increases (revenues and other financing sources) and decreases (expenditures and other financing uses) in net current assets. Under the modified accrual basis of accounting, revenues are recognized in the accounting period in which they become both measurable and available to finance expenditures of the current period. Accordingly, revenues are recorded when received in cash, except that revenues subject to accrual (generally 60 days after year-end) are recognized when due. The primary revenue sources, which have been treated as susceptible to accrual by the School District, are property tax and intergovernmental revenues. Expenditures are recorded in the accounting period in which the related fund liability is incurred. However, debt service expenditures, as well as expenditures related to compensated absences and claims and judgments, are recorded only when payment is due. General capital asset acquisitions are reported as expenditures in governmental funds. Issuance of long-term debt and acquisitions under capital leases are reported as other financing sources.

Interest on invested funds is recognized when earned. Intergovernmental revenues that are reimbursements for specific purposes or projects are recognized in the period in which the expenditures are recorded. All other revenue items are considered to be measurable and available only when cash is received by the School District. Transfers between governmental funds are recorded when the related liability is incurred. These transfers do not represent revenues (expenditures) to the School District and are, therefore, reported as other financing sources (uses) in the governmental fund financial statements.

Since the fund level statements are presented using a different measurement focus and basis of accounting than the government-wide statements, a reconciliation is presented on the page following each fund level statement that summarizes the adjustments necessary to convert the fund level statements into the government-wide presentations.

The School District funds outlays for a particular purpose from both restricted and unrestricted resources. In order to calculate the amounts to report as restricted net position and unrestricted net position in the government-wide financial statements, a flow assumption must be made about the order in which the resources are considered to be applied. When both restricted and unrestricted resources are available for use, it is the School District’s policy to use restricted resources first, then unrestricted resources as they are needed. In order to calculate the amounts to report as restricted, committed, assigned and unassigned fund balance in the governmental fund financial statements a flow assumption must be made about the order in which the resources are considered to be applied. It is the School District’s policy to consider restricted fund balance to have been depleted before any of the components of unrestricted fund balance. Further, when the components of unrestricted fund balance can be used for the same purpose, committed fund balance is depleted first, followed by assigned fund balance. Unassigned fund balance is applied last.

**BASS RIVER TOWNSHIP SCHOOL DISTRICT
NOTES TO THE FINANCIAL STATEMENTS
YEAR ENDED JUNE 30, 2025 (Continued)**

Note 1. Summary of Significant Accounting Policies (Continued)

The School District reports the following major governmental funds:

General Fund - The general fund is the general operating fund of the School District and is used to account for all financial resources except those required to be accounted for in another fund. Included are certain expenditures for vehicles and movable instructional or noninstructional equipment which are classified in the capital outlay sub-fund.

As required by the New Jersey Department of Education the School District includes budgeted capital outlay in this fund. Generally accepted accounting principles as they pertain to governmental entities state that general fund resources may be used to directly finance capital outlays for long-lived improvements as long as the resources in such cases are derived exclusively from unrestricted revenues.

Resources for budgeted capital outlay purposes are normally derived from State of New Jersey Aid, interest earnings and appropriated fund balance. Expenditures are those that result in the acquisition of or additions to capital assets for land, existing buildings, improvements of grounds, construction of buildings, additions to or remodeling of buildings and the purchase of built-in equipment.

Special Revenue Fund - The special revenue fund is used to account for the proceeds of specific revenue from state and federal government, other than major capital projects, debt service or proprietary funds, and local appropriations that are restricted or committed to expenditures for specified purposes.

C. Fiduciary Fund Financial Statements

Fiduciary fund financial statements include a Statement of Fiduciary Net Position and a Statement of Changes in Fiduciary Net Position. The School District's fiduciary funds include Custodial Funds, which are used to report fiduciary activities where the School District controls assets that are collected on behalf of other entities. These assets are not held in a trust and are distributed in accordance with applicable policies. The Custodial Funds are accounted for on a spending or "economic resources" measurement focus and the accrual basis of accounting in accordance with GASBS No. 84, *Fiduciary Activities*.

The School District reports no fiduciary funds.

Budgets/Budgetary Control

Annual appropriated budgets are prepared in the spring of each year for the general, special revenue and debt service funds. The budgets are submitted to the county office. In accordance with P.L.2011 c.202, which became effective January 17, 2012, the School District eliminated the April annual voter referendum on budgets which met the statutory tax levy cap limitations and the board of education members are elected at the November general election. Budgets are prepared using the modified accrual basis of accounting. The legal level of budgetary control is established at line item accounts within each fund. Line item accounts are defined as the lowest (most specific) level of detail as established pursuant to the minimum chart of accounts referenced in N.J.A.C. 6A:23-2-2(f)1. Transfers of appropriations may be made by School Board resolution at any time during the fiscal year in accordance with N.J.A.C. 6A:23-2-11.

BASS RIVER TOWNSHIP SCHOOL DISTRICT
NOTES TO THE FINANCIAL STATEMENTS
YEAR ENDED JUNE 30, 2025 (Continued)

Note 1. Summary of Significant Accounting Policies (Continued)

Formal budgetary integration into the accounting system is employed as a management control device during the year. For governmental funds there are no substantial differences between the budgetary basis of accounting and generally accepted accounting principles with the exception of the legally mandated revenue recognition of the one or more June state aid payment for budgetary purposes only and the special revenue fund as noted below. Encumbrance accounting is also employed as an extension of formal budgetary integration in the governmental fund types. Unencumbered appropriations lapse at fiscal year-end.

The accounting records of the special revenue fund are maintained on the grant accounting budgetary basis. The grant accounting budgetary basis differs from GAAP in that the grant accounting budgetary basis recognizes encumbrances as expenditures and also recognizes the related revenues, whereas the GAAP basis does not. Sufficient supplemental records are maintained to allow for the presentation of GAAP basis financial reports.

The budget, as detailed on Exhibit C-1, includes all amendments to the adopted budget, if any.

Exhibit C-3 presents a reconciliation of the general fund revenues and special revenue fund revenues and expenditures from the budgetary basis of accounts as presented in the general fund budgetary comparison schedules and the special revenue fund budgetary comparison schedule to the GAAP basis of accounting as presented in the Statement of Revenues, Expenditures and Changes in Fund Balance – Governmental Funds. Note that the School District does not report encumbrances outstanding at fiscal year-end as expenditures in the general fund since the general fund budget follows modified accrual basis with the exception of the revenue recognition policy for the last state aid payments.

Encumbrances

Under encumbrance accounting purchase orders, contracts and other commitments for the expenditure of resources are recorded to reserve a portion of the applicable appropriation. Open encumbrances in governmental funds other than the special revenue fund are reported as assigned fund balances at fiscal year-end as they do not constitute expenditures or liabilities but rather commitments related to unperformed contracts for goods and services.

Open encumbrances in the special revenue fund for which the School District has received advances are reflected in the balance sheet as a reduction of the accounts receivables or as unearned revenue at fiscal year-end.

The encumbered appropriation authority carries over into the next fiscal year. An entry will be made at the beginning of the next fiscal year to increase the appropriation reflected in the certified budget by the outstanding encumbrance amount as of the current fiscal year-end.

Cash, Cash Equivalents and Investments

Cash and Cash equivalents include petty cash, change funds, cash in banks and all highly liquid investments with a maturity of three months or less at the time of purchase and are stated at cost plus accrued interest. U.S. Treasury and agency obligations and certificates of deposit with maturities of one year or less when purchased are considered cash equivalents and stated at cost.

BASS RIVER TOWNSHIP SCHOOL DISTRICT
NOTES TO THE FINANCIAL STATEMENTS
YEAR ENDED JUNE 30, 2025 (Continued)

Note 1. Summary of Significant Accounting Policies (Continued)

Investments are stated at fair value in accordance with Governmental Accounting Standards Board (GASB). New Jersey school districts are limited as to the types of investments and types of financial institutions they may invest in. N.J.S.18A:20-37 provides a list of permissible investments that may be purchased by New Jersey school districts.

N.J.S.A.17:9-41 et. seq. establishes the requirements for the security of deposits of governmental units. The statute requires that no governmental unit shall deposit public funds in a public depository unless such funds are secured in accordance with the Governmental Unit Deposit Protection Act (“GUDPA”). GUDPA was enacted in 1970 to protect governmental units from loss of funds on deposit with a failed banking institution in New Jersey. Public depositories include Savings and Loan institutions, banks (both state and national banks) and savings banks the deposits of which are federally insured. All public depositories must pledge collateral, having a market value at least equal to five percent of the average daily balance of collected public funds, to secure the deposits of governmental units. If a public depository fails, the collateral it has pledged, plus the collateral of all other public depositories, is available to pay the full amount of their deposits to the governmental units.

For purposes of the statement of cash flows, the School District considers all highly liquid investments (including restricted assets) with a maturity when purchased of twelve months or less and all local government investment pools to be cash equivalents.

Tuition Receivable/Payable

Tuition rates were established by the receiving School District based on estimated costs. The charges are subject to adjustment when the actual costs are determined.

Inventories

Inventories are valued at cost, using the first-in/first-out (FIFO) method. The costs of inventories are recorded as expenditures when consumed rather than when purchased.

Interfund Receivables/Payables

Interfund receivables/payables represent amounts that are owed, other than charges for goods or services rendered to/from a particular fund in the School District and that are due within one year. As previously mentioned, these amounts are eliminated in the governmental and business-type columns of the Statement of Net Position, except for the net residual amounts due between governmental and business-type activities, which are presented as Internal Balances in the Statement of Net Position.

Capital Assets

Capital assets are reported in the applicable governmental or business-type activities column in the government-wide financial statements. Purchased or constructed assets are recorded at actual cost or estimated historical cost if actual cost is unavailable. Donated capital assets are recorded at estimated fair market value at the date of donation. All reported capital assets except land and construction in progress are depreciated. The costs of normal maintenance and repairs that do not add to the value of the asset or materially extend asset lives are not capitalized. The School District does not possess any infrastructure. The School District has established a threshold of \$2,000 for capitalization of depreciable assets.

**BASS RIVER TOWNSHIP SCHOOL DISTRICT
NOTES TO THE FINANCIAL STATEMENTS
YEAR ENDED JUNE 30, 2025 (Continued)**

Note 1. Summary of Significant Accounting Policies (Continued)

Capital assets of the School District are depreciated or amortized using the straight-line method over the following estimated useful lives:

Description	Governmental Activities Estimated Lives	Business-Type Activities Estimated Lives
Land Improvements	10-20 Years	N/A
Building and improvements	10-50 Years	N/A
Furniture and Equipment	5-20 Years	5-12 Years
Vehicles	5-10 Years	4-6 Years

Compensated Absences

Compensated absences are those absences for which employees will be paid, such as vacation, sick leave and sabbatical leave. In accordance with GASB Statement No. 101, *Compensated Absences*, liabilities for compensated absences are recognized for (1) leave that has not been used and (2) leave that has been used but not yet paid in cash or settled through noncash means. The liability should be recognized for leave that has not been used if (a) the leave is attributable to services already rendered, (b) the leave accumulates, and (c) the leave is more likely than not to be used for time off or otherwise paid in cash or settled through noncash means.

The entire compensated absences liability is reported on the government-wide financial statements and proprietary fund financial statements. Compensated absences liability is not recorded in the governmental funds. Instead expenditures are recognized in the governmental funds as payments come due each period, for example, as a result of resignations or retirements.

Due to the School District becoming non-operating, there is no longer a compensated absence liability.

Unearned Revenue

Unearned revenue arises when assets are recognized before revenue recognition criteria have been satisfied and is recorded as a liability until the revenue is both measureable and the School District is eligible to realize the revenue.

Accrued Liabilities and Long-Term Obligations

All payables, accrued liabilities, and long-term obligations are reported in the government-wide financial statements, and all payables, accrued liabilities and long-term obligations payable from proprietary funds are reported on the proprietary fund financial statements. In general, government fund payables and accrued liabilities that, once incurred, are paid in a timely manner and in full from current financial resources, are reported as obligations of the funds. However, claims and judgments, compensated absences, special termination benefits and contractually required pension contributions that will be paid from governmental funds, are reported as a liability in the fund financial statements only to the extent that they are normally expected to be paid with expendable available financial resources.

Accounting Estimates

The preparation of financial statements in conformity with accounting principles generally accepted in the United States of America requires management to make estimates and assumption that affect certain reported amounts reported in the financial statements and accompanying note disclosures. Actual results could differ from those estimates.

BASS RIVER TOWNSHIP SCHOOL DISTRICT
NOTES TO THE FINANCIAL STATEMENTS
YEAR ENDED JUNE 30, 2025 (Continued)

Note 1. Summary of Significant Accounting Policies (Continued)

Interfund Activity

Transfers between governmental and business-type activities on the government-wide statements are reported in the same manner as general revenues. Exchange transactions between funds are reported as revenues in the seller funds and as expenditures/expenses in the purchaser funds. Flows of cash or goods from one fund to another without a requirement for repayment are reported as interfund transfers. Interfund transfers are reported as other financing sources/uses in governmental funds and after non-operating revenues/expenses in proprietary funds. Reimbursements from funds responsible for particular expenditures/expenses to the funds that initially paid for them are not presented on the financial statements. As a general rule the effect of interfund activity has been eliminated from the government-wide financial statements.

Deferred Outflows and Deferred Inflows of Resources

In addition to assets, the Statement of Net Position will sometimes report a separate section for deferred outflows of resources. This separate financial statement element, deferred outflows of resources, represents a consumption of net position that applies to a future period(s) and so will not be recognized as an outflow of resources (expense/expenditure) until then.

In addition to liabilities, the statement of net position will sometimes report a separate section for deferred inflows of resources. This separate financial statement element, deferred inflows of resources, represents an acquisition of net position that applies to a future periods and so will not be recognized as an inflow of resources (revenue) until that time.

Pensions

For purposes of measuring the net pension liability, deferred outflows of resources and deferred inflows of resources related to pensions, and pension expense, information about the pension plan's fiduciary net position of the Public Employees' Retirement System (PERS) and Teacher's Pension and Annuity Fund (TPAF) and additions to/deductions from the PERS's and TPAF's fiduciary net position have been determined on the same basis as they are reported by the plans. For this purpose, benefit payments (including refunds of employee contributions) are recognized when due and payable in accordance with the benefit terms. Investments are reported at fair value.

Fund Balance

In accordance with Government Accounting Standards Board 54, Fund Balance Reporting and Governmental Fund Type Definitions, fund balances in the governmental funds financial statements are classified into the following five categories, as defined below:

Non-spendable – This classification includes amounts that cannot be spent because they are either not in spendable form or are legally or contractually required to be maintained intact. Non-spendable items are not expected to be converted to cash or are not expected to be converted to cash within the next year.

Restricted – This classification includes amounts for which constraints have been placed on the use of the resources either externally imposed by creditors (such as through a debt covenant), grantors, contributors, or laws or regulations of other governments, or imposed by law through constitutional provisions or enabling legislation.

**BASS RIVER TOWNSHIP SCHOOL DISTRICT
NOTES TO THE FINANCIAL STATEMENTS
YEAR ENDED JUNE 30, 2025 (Continued)**

Note 1. Summary of Significant Accounting Policies (Continued)

Committed – This classification includes amounts that can be used only for specific purposes pursuant to constraints imposed by formal action of the Board of Education. These amounts cannot be used for any other purpose unless the Board of Education removes or changes the specified use by taking the same type of action (resolution) that was employed when the funds were initially committed. This classification also includes contractual obligations to the extent that existing resources have been specifically committed for use in satisfying those contractual requirements.

Assigned – This classification includes amounts that are constrained by the School District’s intent to be used for a specific purpose but are neither restricted nor committed. This intent can be expressed by the Board of Education or through the Board of Education delegating this responsibility to the business administrator through the budgetary process.

Unassigned – This classification includes the residual fund balance for the General Fund. The Unassigned classification also includes negative residual fund balance of any other governmental fund that cannot be eliminated by offsetting of Assigned fund balance amounts.

When an expenditure is incurred for purposes for which both restricted and unrestricted fund balance is available, it is the School District’s policy to consider restricted funds to have been spent first. When an expenditure is incurred for which committed, assigned, or unassigned fund balances are available, it is the School District’s policy to consider amounts to have been spent first out of committed funds, then assigned funds, and finally unassigned funds, as needed, unless the Board has provided otherwise in its commitment or assignment actions.

Net Position

Net position, represents the difference between summation of assets and deferred outflows of resources, and the summation of liabilities and deferred inflows of resources. Net position is classified into the following three components:

Net Investment in Capital Assets – This components represents capital assets, net of accumulated depreciation, net of outstanding balances of borrowings used for acquisition, construction, or improvement of those assets.

Restricted – This component of net position is reported as restricted when there are limitations imposed on their use either through the enabling legislation adopted by the School District or through external restrictions imposed by creditors, grantors or laws or regulations of other governments.

Unrestricted – This component of net position is reported as unrestricted when it does not meet the criteria of the other two components of net position.

Subsequent Events

Management has reviewed and evaluated all events and transactions that occurred between June 30, 2025 and December 1, 2025 the date that the financial statements were available for issuance, for possible disclosure and recognition in the financial statements, and no items have come to the attention of the School District that would require disclosure.

**BASS RIVER TOWNSHIP SCHOOL DISTRICT
NOTES TO THE FINANCIAL STATEMENTS
YEAR ENDED JUNE 30, 2025 (Continued)**

Note 1. Summary of Significant Accounting Policies (Continued)

Impact of Recently Issued Accounting Principles

Adopted Accounting Pronouncements

The following GASB Statements became effective for the fiscal year ended June 30, 2025:

- Statement No. 101, Compensated Absences. The requirements of this Statement are effective for fiscal years beginning after December 15, 2023. Management has determined that implementation of this Statement did not have a significant impact on the District's financial statements.
- Statement No. 102, Certain Risk Disclosures. The requirements of this Statement are effective for fiscal years beginning after June 15, 2024. Management has determined that implementation of this Statement did not have a significant impact on the District's financial statements.

Accounting Pronouncements Effective in Future Reporting Periods

- Statement No. 103, *Financial Reporting Model Improvements*. The requirements of this Statement are effective for fiscal years beginning after June 15, 2025.
- Statement No. 104, *Disclosure of Certain Capital Assets*. The requirements of this Statement are effective for fiscal years beginning after June 15, 2025, and all reporting periods thereafter.

Management has not yet determined the potential impact on the District's financial statements

Note 2. Deposits and Investments

Deposits

Custodial Credit Risk – Custodial credit risk is the risk that, in the event of a bank failure, the Board's deposits may not be recovered. Although the Board does not have a formal policy regarding custodial credit risk, NJSA 17:9-41 et seq. requires that the governmental units shall deposit public funds in public depositories protected from loss under the provisions of GUDPA. Under the Act, the first \$250,000 of governmental deposits in each insured depository is protected by FDIC. Public fund owned by the Board in excess of FDIC insured amounts are protected by GUDPA. However, GUDPA does not protect intermingled trust funds such as salary withholdings, student activity fund or other funds that may pass to the Board relative to the happening of a future condition. Such funds are shown as Uninsured and Uncollateralized in the schedule below. As of June 30, 2025, the School District's bank balance of \$1,328,281.96 was exposed to custodial credit risk as follows:

Insured under FDIC and GUDPA	\$ 1,328,281.96
Total	<u>\$ 1,328,281.96</u>

Investments

The School District had no investments at June 30, 2025.

Note 3. Reserve Accounts

Unemployment Claim Reserve

Unemployment Claim Reserve funds are restricted pursuant to N.J.S.A. 43:21-7.3(g), which requires that employer and employee contributions be held in a trust fund maintained by the governmental entity or instrumentality for unemployment benefit cost purposes and any surplus remaining in this trust fund must be retained in reserve for payment of benefit costs in subsequent years.

The activity of the unemployment claim reserve for the July 1, 2024 to June 30, 2025 fiscal year is as follows:

Beginning Balance, July 1, 2024	\$ 7,960.81
Interest Earnings	<u>45.05</u>
Ending Balance, June 30, 2025	<u>\$ 8,005.86</u>

**BASS RIVER TOWNSHIP SCHOOL DISTRICT
NOTES TO THE FINANCIAL STATEMENTS
YEAR ENDED JUNE 30, 2025 (Continued)**

Note 3. Reserve Accounts (Continued)

Tuition Reserve

A tuition reserve is restricted to be used to accumulate funds in accordance with N.J.A.C. 6A:23A-14.4(a)(3) for anticipated tuition adjustments. According to N.J.A.C. 6A:23A-14.4(a)(3) permits the district to establish a tuition reserve in the general fund for up to 10 percent of the estimated tuition cost in the contract year for an anticipated tuition adjustment in the second year following the contract year. The code also requires that the district transfer to the general fund, by board resolution, any interest earned on the investments in a tuition reserve account on no less than an annual basis.

The District established the reserve in 2021 with a \$73,228.02 deposit for use in the 2022/2023 School budget to finance unanticipated tuition expenditures. The tuition reserve account is maintained in the general fund and its activity is included in the general fund annual budget.

The activity of the tuition reserve for the July 1, 2024 to June 30, 2025 fiscal year is as follows:

Beginning Balance, July 1, 2024	\$	380,000.00
Increased by Deposits: Approved by Board		158,800.00
Decreased by: Withdrawal for Tuition Adj.		200,000.00
Ending Balance, June 30, 2025	\$	338,800.00

Emergency Reserve

The School District established an emergency reserve account by inclusion of \$250,000 on June 16, 2023 for the accumulation of funds for use in accordance with N.J.S.A. 18A: 7F-41c(1) to finance unanticipated general fund expenditures.

The activity of the emergency reserve for the July 1, 2024 to June 30, 2025 fiscal year is as follows:

Beginning Balance, July 1, 2023	\$	250,000.00
Ending Balance, June 30, 2024	\$	250,000.00

Note 4. Accounts Receivable

Accounts receivable at June 30, 2024 consisted of accounts and intergovernmental grants. All receivables are considered collectible in full due to the stable condition of state and federal programs, the current fiscal year guarantee of federal funds and the budgetary control of New Jersey governmental entities. Accounts receivable in the School District's governmental as of June 30, 2024, consisted of the following:

	Governmental Funds	
<u>Description</u>	<u>General Fund</u>	Total Governmental <u>Activities</u>
State Aid	\$ 3,736.00	\$ 3,736.00
Total	\$ 3,736.00	\$ 3,736.00

**BASS RIVER TOWNSHIP SCHOOL DISTRICT
NOTES TO THE FINANCIAL STATEMENTS
YEAR ENDED JUNE 30, 2025 (Continued)**

Note 5. Long-Term Obligations

Bonds Authorized but not Issued

As of June 30, 2025, the School District had no bonds authorized but not issued.

Note 6. Pension Plans

A. Public Employees' Retirement System (PERS)

Plan Description - The State of New Jersey, Public Employees' Retirement System (PERS) is a cost-sharing multiple-employer defined benefit pension plan administered by the State of New Jersey, Division of Pensions and Benefits (the Division). For additional information about PERS, please refer to Division's Annual Comprehensive Financial Report (ACFR) which can be found at <http://www.nj.gov/treasury/pensions/financial-reports.shtml>.

The vesting and benefit provisions are set by *N.J.S.A. 43:15A*. PERS provides retirement, death and disability benefits. All benefits vest after ten years of service.

The following represents the membership tiers for PERS:

<u>Tier</u>	<u>Definition</u>
1	Members who were enrolled prior to July 1, 2007
2	Members who were eligible to enroll on or after July 1, 2007 and prior to November 2, 2008
3	Members who were eligible to enroll on or after November 2, 2008 and prior to May 22, 2010
4	Members who were eligible to enroll on or after May 22, 2010 and prior to June 28, 2011
5	Members who were eligible to enroll on or after June 28, 2011

Service retirement benefits of 1/55th of final average salary for each year of service credit is available to tiers 1 and 2 members upon reaching age 60 and to tier 3 members upon reaching age 62. Service retirement benefits of 1/60th of final average salary for each year of service credit is available to tier 4 members upon reaching age 62 and tier 5 members upon reaching age 65. Early retirement benefits are available to tiers 1 and 2 members before reaching age 60, tiers 3 and 4 with 25 or more years of service credit before age 62 and tier 5 with 30 or more years of service credit before age 65. Benefits are reduced by a fraction of a percent for each month that a member retires prior to the age at which a member can receive full early retirement benefits in accordance with their respective tier. Tier 1 members can receive an unreduced benefit from age 55 to age 60 if they have at least 25 years of service. Deferred retirement is available to members who have at least 10 years of service credit and have not reached the service retirement age for the respective tier.

**BASS RIVER TOWNSHIP SCHOOL DISTRICT
NOTES TO THE FINANCIAL STATEMENTS
YEAR ENDED JUNE 30, 2025 (Continued)**

Note 6. Pension Plans (continued)

Basis of Presentation - The schedule of employer and nonemployer allocations and the schedules of pension amounts by employer and nonemployer (collectively, the Schedules) present amounts that are considered elements of the financial statements of PERS, its participating employers or the State of New Jersey (the State) as a nonemployer contributing entity. Accordingly, they do not purport to be a complete presentation of the financial position or changes in financial position of PERS, its participating employers, or the State. The accompanying Schedules were prepared in accordance with U.S. generally accepted accounting principles. Such preparation requires management of PERS to make a number of estimates and assumptions relating to the reported amounts. Due to the inherent nature of these estimates, actual results could differ from those estimates.

Contributions - The contribution policy for PERS is set by N.J.S.A. 43:15A and requires contributions by active members and contributing employers. State legislation has modified the amount that is contributed by the State. The State's pension contribution is based on an actuarially determined amount, which includes the employer portion of the normal cost and an amortization of the unfunded accrued liability. Funding for noncontributory group insurance benefits is based on actual claims paid.

The local employers' contribution amounts are based on an actuarially determined rate which includes the normal cost and unfunded accrued liability. Chapter 19, P.L. 2009 provided an option for local employers of PERS to contribute 50% of the normal and accrued liability contribution amounts certified for payments due in State fiscal year 2009. Such employers will be credited with the full payment and any such amounts will not be included in their unfunded liability. The actuaries will determine the unfunded liability of those retirement systems, by employer, for the reduced normal and accrued liability contributions provided under this law. This unfunded liability will be paid by the employer in level annual payments over a period of 15 years beginning with the payments due in the fiscal year ended June 30, 2012 and will be adjusted by the rate of return on the actuarial value of assets.

Pension Liability, Pension Expense and Deferred Outflows/Inflows of Resources - At June 30, 2025, the School District reported a liability of \$0.00 for its proportionate share of the PERS net pension liability. The net pension liability was measured as of June 30, 2024. The total pension liability used to calculate the net pension liability was determined using update procedures to roll forward the total pension liability from an actuarial valuation as of July 1, 2024, to the measurement date of June 30, 2025. The School District's proportion of the net pension liability was based on the School District's actual contributions to the plan relative to the total of all participating employers' contributions for the year ended June 30, 2025. The School District's proportion measured as of June 30, 2025, was 0.00%, which was the same as June 30, 2024 due to it being a non-operating district

For the year ended June 30, 2024, the School District recognized full accrual pension benefit of \$106,185 in the government-wide financial statements. This pension expense was based on the pension plans June 30, 2025 the School District reported deferred outflows of resources and deferred inflows of resources related to PERS from the following sources:

	Deferred Outflows of Resources	Deferred Inflows of Resources
Changes in Proportion and Differences between School District Contributions and Proportionate Share of Contributions	\$ -	\$ 203,786.00
	\$ -	\$ 203,786.00

Amounts reported as deferred outflows of resources and deferred inflows of resources related to pensions will be recognized in pension expense as follows:

Year Ending June 30,	
2026	\$ (40,757)
2027	(40,757)
2028	(40,757)
2029	(40,757)
2030	(40,758)
	\$ (203,786)

**BASS RIVER TOWNSHIP SCHOOL DISTRICT
NOTES TO THE FINANCIAL STATEMENTS
YEAR ENDED JUNE 30, 2025 (Continued)**

Note 6. Pension Plans (Continued)

Actuarial Assumptions – The collective total pension liability for the June 30, 2023 measurement date was determined by an actuarial valuation as of July 1, 2022, which was rolled forward to June 30, 2023. This actuarial valuation used the following assumptions:

Inflation Rate:	
Price	2.75%
Wage	3.25%
Salary Increases:	2.75% - 6.55% Based on Years of Service
Investment Rate of Return	7.00%
Mortality Rate of Return:	Pub-2010 General Below-Median Income Employee mortality table with fully generational mortality improvement projections from the central year using Scale MP-2021
Period of Actuarial Experience	
Study upon which Actuarial	
Assumptions were Based	July 1, 2018 - June 30, 2021

Pre-retirement mortality rates were based on the Pub-2010 General Below-Median Income Employee Mortality Table with an 82.2% adjustment for males and 101.4% adjustment for females, and with future improvement from the base year of 2010 on a generational basis. Post-retirement mortality rates were based on the Pub-2010 General Below-Median Income Healthy Retiree mortality table with a 91.4% adjustment for males and 99.7% adjustment for females, and with future improvement from the base year of 2010 on a generational basis. Disability retirement rates used to value disabled retirees were based on the Pub-2010 Non-Safety Disabled Retiree mortality table with a 127.7% adjustment for males and 117.2% adjustment for females, and with future improvement from the base year of 2010 on a generational basis. Mortality improvement is based on Scale MP-2021.

The actuarial assumptions used in the July 1, 2021 valuation were based on the results of an actuarial experience study for the period July 1, 2018 to June 30, 2021.

Long-Term Expected Rate of Return - In accordance with State statute, the long-term expected rate of return on plan investments (7.00% at June 30, 2022) is determined by the State Treasurer, after consultation with the Directors of the Division of Investments and Division of Pensions and Benefits, the board of trustees and the actuaries. The long-term expected rate of return was determined using a building block method in which best-estimate ranges of expected future real rates of return (expected returns, net of pension plan investment expense and inflation) are developed for each major asset class. These ranges are combined to produce the long-term expected rate of return by weighting the expected future real rates of return by the target asset allocation percentage and by adding expected inflation. Best estimates of arithmetic real rates of return for each major asset class included in TPAF's target asset allocation as of June 30, 2022 are summarized in the following table:

**BASS RIVER TOWNSHIP SCHOOL DISTRICT
NOTES TO THE FINANCIAL STATEMENTS
YEAR ENDED JUNE 30, 2025 (Continued)**

Note 6. Pension Plans (Continued)

<u>Asset Class</u>	<u>Target Allocation</u>	<u>Long-Term Expected Real Rate of Return</u>
U.S. Equity	28.00%	8.63%
Non-U.S. Developed Markets Equity	12.75%	8.85%
International Small Cap Equity	1.25%	8.85%
Emerging Markets Equity	5.50%	10.66%
Private Equity	13.00%	12.40%
Real Estate	8.00%	10.95%
Real Assets	3.00%	8.20%
High Yield	4.50%	6.74%
Private Credit	8.00%	8.90%
Investment Grade Credit	7.00%	5.37%
Cash Equivalents	2.00%	3.57%
U.S. Treasuries	4.00%	3.57%
Risk Mitigation Strategies	3.00%	7.10%
	<u>100.00%</u>	

Discount Rate - The discount rate used to measure the total pension liability was 7.00% as of June 30, 2024. The projection of cash flows used to determine the discount rate assumed that contributions from plan members will be made at the current member contribution rates and that contributions from employers will be made based on 100% of actuarially determined contributions for the State. Based on those assumptions, the plan's fiduciary net position was projected to be available to make projected future benefit payments of current plan members. Therefore, the long-term expected rate of return on plan investments was applied to projected benefit payments in determining the total pension liability.

Sensitivity of the School District's proportionate share of the Net Pension Liability to Changes in the Discount Rate – As previously mentioned, TPAF has a special funding situation where the State pays 100% of the School District's annual required contribution. The following represents the State's proportionate share of the net pension liability, attributable to the School District calculated using the discount rate of 7.00% as well as what the State's proportionate share of the net pension liability, attributable to the School District's would be if it were calculated using a discount rate that is 1-percentage point lower or 1-percentage point higher than the current rate:

	<u>At 1% Decrease (6.00%)</u>	<u>At Current Discount Rate (7.00%)</u>	<u>At 1% Increase (8.00%)</u>
State of New Jersey's Proportionate Share of Net Pension Liability associated with the School District	\$ -	\$ -	\$ -

**BASS RIVER TOWNSHIP SCHOOL DISTRICT
NOTES TO THE FINANCIAL STATEMENTS
YEAR ENDED JUNE 30, 2025 (Continued)**

Note 6. Pension Plans (Continued)

B. Defined Contribution Retirement Plan (DCRP)

Plan Description - The Defined Contribution Retirement Program (DCRP) was established July 1, 2007, under the provisions of N.J.S.A. 43:15C-1 et seq. The DCRP provides eligible members with a tax-sheltered, defined contribution retirement benefit, along with life insurance and disability coverage.

Individuals eligible for membership in the DCRP include:

- State or local officials who are elected or appointed on or after July 1, 2007;
- Employees enrolled in the Public Employees' Retirement System (PERS) or Teachers' Pension and Annuity Fund (TPAF) on or after July 1, 2007, who earn salary in excess of established "maximum compensation" limits;
- Employees enrolled in the Police and Firemen's Retirement System (PFRS) or State Police Retirement System (SPRS) after May 21, 2010, who earn salary in excess of established "maximum compensation" limits;
- Employees otherwise eligible to enroll in the PERS or TPAF on or after November 2, 2008, who do not earn the minimum annual salary for PERS or TPAF Tier 3 enrollment but who earn salary of at least \$5,000 annually. The minimum salary in 2018 is \$8,300 and is subject to adjustment in future years.
- Employees otherwise eligible to enroll in the PERS or TPAF after May 21, 2010, who do not work the minimum number of hours per week required for PERS or TPAF Tier 4 or Tier 5 enrollment but who earn salary of at least \$5,000 annually. The minimum number is 35 hours per week for State employees, or 32 hours per week for local government or local education employees.

Contributions - The contribution policy is set by N.J.S.A. 43:15C-3 and requires active members and contribution employers. When enrolled in the DCRP, members are required to contribute 5.5% of their base salary to a tax-deferred investment account established with Prudential Financial, which jointly administers the DCRP investments with the Division of Pension and Benefits. Member contributions are matched by a 3% contribution from the School District.

For the year ended June 30, 2025, the School District did not make any payments to the Defined Contribution Retirement program.

Note 7. Other Post-Retirement Benefits

General Information about the OPEB Plan

The State of New Jersey reports a liability as a result of its statutory requirements to pay other postemployment (health) benefits for State Health Benefit Local Education Retired Employees Plan. The State Health Benefit Local Education Retired Employees Plan is a multiple-employer defined benefit OPEB plan that is administered on a pay-as-you-go basis. Accordingly, no assets are accumulated in a qualifying trust that meets the criteria in paragraph 4 of GASB Statement No. 75, *Accounting and Financial Reporting for the Postemployment Benefits Other Than Pensions*. The State Health Benefit Local Education Retired Employees Plan provides medical, prescription drug, and Medicare Part B reimbursement to retirees and their covered dependents of local education employers.

**BASS RIVER TOWNSHIP SCHOOL DISTRICT
NOTES TO THE FINANCIAL STATEMENTS
YEAR ENDED JUNE 30, 2025 (Continued)**

Note 7. Other Post-Retirement Benefits (continued)

Total Nonemployer OPEB Liability

The total nonemployer OPEB liability of \$59,650,630,530 as of June 30, 2024 was determined by an actuarial valuation as of June 30, 2023, which was rolled forward to June 30, 2024. The actuarial assumptions vary for each plan member depending on the pension plan the member is enrolled in. This actuarial valuation used the following actuarial assumptions, applied to all periods in the measurement:

	TPAF/ABP	PERS	PFRS
Salary Increases	2.75 - 4.25%	2.75 - 6.55%	3.25 - 16.25%
	based on years of service	based on years of service	based on years of service

Preretirement mortality rates were based on the Pub-2010 Healthy "Teachers" (TPAF/ABP), "General" (PERS), and "Safety" (PFRS) classification headcount-weighted mortality table with fully generational mortality improvement projections from the central year using the Scale MP-2021. Postretirement mortality rates were based on the PUB-2010 "General" classification headcount-weighted mortality table with fully generational mortality improvement projections from the central year using the Scale MP-2021. Disability mortality was based on the PUB-2010 "General" classification headcount-weighted disabled mortality table with fully generational mortality improvement projections from the central year using the Scale MP-2021 for current disables retirees. Future disabled retirees were based on Pub-2010 "Safety" (PFRS), "General" (PERS), and "Teachers" (TPAF/ABP) classification headcount-weighted disabled mortality table with fully generational mortality improvement projections from the central year using Scale MP-2021.

The actuarial assumptions used in the July 1, 2023 valuation were based on the results of the TPAF, PERS and PFRS experience studies prepared for July 1, 2018 to June 30, 2021.

100% of active members are considered to participate in the Plan upon retirement.

OPEB Obligations and OPEB Expense - The State's proportionate share of the total Other Post Employment Benefits Obligations, attributable to the School District as of June 30, 2024 was \$3,535,229. The School District's proportionate share was \$0.

The OPEB Obligation was measured as of June 30, 2024, and the total OPEB Obligation used to calculate the OPEB Obligation was determined by an actuarial valuation as of July 1, 2023, which was rolled forward to June 30, 2024. The State's proportionate share of the OPEB Obligation associated with the District was based on projection of the State's long-term contributions to the OPEB plan associated with the District relative to the projected contributions by the State associated with all participating school districts, actuarially determined. At June 30, 2024, the State proportionate share of the OPEB Obligation attributable to the School District was 0.00592656%, which was an increase of 0.00025441% from its proportion measured as of June 30, 2023.

For the fiscal year ended June 30, 2025, the State of New Jersey recognized an OPEB expense in the amount of - \$641,891.00 for the State's proportionate share of the OPEB expense attributable to the School District. This OPEB expense was based on the OPEB plans June 30, 2024 measurement date.

**BASS RIVER TOWNSHIP SCHOOL DISTRICT
NOTES TO THE FINANCIAL STATEMENTS
YEAR ENDED JUNE 30, 2025 (Continued)**

Note 7. Other Post-Retirement Benefits (continued)

Health Care Trend Assumptions

For pre-Medicare medical benefits, the trend rate is initially 6.50% and decreases to a 4.50% long-term trend rate after nine years. For post-65 medical benefits PPO, the trend rate is increasing to 14.8% in fiscal year 2026, and decreases to 4.50% in fiscal year 2033. For HMO, the trend rate is increasing to 17.4% in fiscal year 2026, and decreases to 4.50% in fiscal year 2033. For prescription drug benefits, the initial trend rate is 9.50% and decreases to a 4.50% long-term trend rate after seven years. For the Medicare Part B reimbursement, the trend rate is 5.00%.

Discount Rate

The discount rate used to measure the total OPEB liability was 3.65%. This represents the municipal bond return rate as chosen by the Division. The source is the Bond Buyer Go 20-Bond Municipal Bond Index, which includes tax-exempt general obligation municipal bonds with an average rating of AA/Aa or higher. As the long-term rate of return is less than the municipal bond rate, it is not considered in the calculation of the discount rate, rather the discount rate is set at the municipal bond rate.

Sensitivity of Total Nonemployer OPEB Liability to Changes in Discount Rate:

The following presents the total nonemployer OPEB liability as of June 30, 2024, respectively, calculated using the discount rate as disclosed above as well as what the total nonemployer OPEB liability would be if it was calculated using a discount rate that is 1-percentage point lower or 1-percentage point higher than the current rate:

	June 30, 2024		
	At 1% Decrease (2.65%)	At Discount Rate (3.65%)	At 1% Increase (4.65%)
State of New Jersey's Proportionate Share of Obligations Associated the School District	\$ 4,140,510	\$ 3,535,229	\$ 3,048,457
State of New Jersey's Total Nonemployer Liability	\$ 69,863,663,542	\$ 59,650,630,530	\$ 51,437,232,141

**BASS RIVER TOWNSHIP SCHOOL DISTRICT
NOTES TO THE FINANCIAL STATEMENTS
YEAR ENDED JUNE 30, 2025 (Continued)**

Note 7. Post-Employment Benefits (Continued)

Sensitivity of Total Nonemployer OPEB Liability to Changes in the Healthcare Trend Rate:

The following presents the total nonemployer OPEB liability as of June 30, 2024, calculated using the healthcare trend rate as disclosed above as well as what the total nonemployer OPEB liability would be if it was calculated using a healthcare trend rate that is 1-percentage point lower or 1-percentage point higher than the current rate:

	6/30/2024		
	1% Decrease	Healthcare Cost Trend Rate*	1% Increase
State of New Jersey's Proportionate Share of Total OPEB Obligations Associated with the School District	\$ 2,944,871	\$ 3,535,229	\$ 4,304,209
State of New Jersey's Total Nonemployer OPEB Liability	\$ 49,689,409,509	\$ 59,650,630,530	\$ 72,625,778,279

* See Healthcare Cost Trend Assumptions for details of rates.

Additional Information

Collective balances of the Local Group at June 30, 2024 are as follows:

	Deferred Outflows of Resources	Deferred Inflows of Resources
Differences between Expected & Actual Experience	\$ 6,378,932,312	\$ 11,139,706,892
Changes in Assumption	10,004,978,073	11,662,607,882
Contributions Made in Fiscal Year Ending 2025 After June 30, 2024 Measurement Date **	TBD	N/A
	\$ 16,383,910,385	\$ 22,802,314,774

**BASS RIVER TOWNSHIP SCHOOL DISTRICT
NOTES TO THE FINANCIAL STATEMENTS
YEAR ENDED JUNE 30, 2025 (Continued)**

Note 7. Post-Employment Benefits (Continued)

Amounts reported as deferred outflows of resources and deferred inflows of resources related to OPEB will be recognized in OPEB expense as follows:

Fiscal Year Ending June 30,	
2025	\$ (2,115,877,507)
2026	(1,774,175,666)
2027	(842,677,045)
2028	221,470,185
2029	(1,537,725,697)
Thereafter	(369,418,659)
	\$ (6,418,404,389)

** Employer Contributions made after June 30, 2024 are reported as a deferred outflow of resources, but are not amortized in expense.

Plan Membership

At June 30, 2023, the Program membership consisted of the following:

Active Plan Members	219,185
Inactive Plan Members or Beneficiaries	
Currently Receiving Benefits	153,556
	372,741

Changes in the Total OPEB Liability

The change in the State's Total OPEB liability for the fiscal year ended June 30, 2025 (measurement date June 30, 2024) is as follows:

Service Cost	\$ 2,152,062,729
Interest Cost	1,963,557,443
Differences Between Expected and Actual	158,934,425
Changes in Assumptions	4,462,660,491
Contributions: Member	51,347,810
Gross Benefit Payments	(1,499,600,607)
	7,288,962,291
Net Changes in Total OPEB Liability	7,288,962,291
Total OPEB Liability (Beginning)	52,361,668,239
	\$ 59,650,630,530
Total OPEB Liability (Ending)	\$ 59,650,630,530
Total Covered Employee Payroll	\$ 15,845,935,573
Net OPEB Liability as a Percentage of Payroll	376.44%

Note 8. On-Behalf Payments for Fringe Benefits and Salaries

As previously mentioned, the School District receives on-behalf payments from the State of New Jersey for normal costs and post-retirement medical costs related to the Teachers' Pension and Annuity Fund (TPAF) pension plan. The School District is not legally responsible for these contributions. The on-behalf payments are recorded as revenues and expenditures in the government-wide and general fund financial statements. For the fiscal year ended June 30, 2025, the School District did not receive any on-behalf payments.

**BASS RIVER TOWNSHIP SCHOOL DISTRICT
NOTES TO THE FINANCIAL STATEMENTS
YEAR ENDED JUNE 30, 2025 (Continued)**

Note 9. Risk Management

The School District is exposed to various risks of loss related to torts; theft of, damage to, and destruction of assets; errors and omissions; injuries to employees; and natural disasters.

New Jersey Unemployment Compensation Insurance – The School District has elected to fund its New Jersey Unemployment Compensation Insurance under the “Benefit Reimbursement Method”. Under this plan the School District is required to reimburse the New Jersey Unemployment Trust Fund for benefits paid to its former employees and charged to its account with the State. The School District is billed quarterly for amounts due to the State. The following is a summary of School District contributions, reimbursements to the State for benefits paid and the ending balance of the School District’s trust fund for the current and previous two years:

<u>Fiscal Year</u>	<u>Interest Earnings</u>	<u>Amount Reimbursed</u>	<u>Ending Balance</u>	
			<u>Restricted Unemployment Fund Balance</u>	<u>Unemployment Trust Liability</u>
2024-2025	\$ 45.05	\$ -	\$ 8,005.86	\$ -
2023-2024	69.70	9,406.16	7,960.81	-
2022-2023	57.85	-	17,297.27	-

Property and Liability Insurance – The School District maintains commercial insurance coverage for property, liability, student accident and surety bonds. A complete schedule of insurance coverage can be found in the Statistical Section of this Annual Comprehensive Financial Report.

Joint Insurance Pool – The School District also participates in the School Alliance Insurance Fund and, public entity risk pool. The Pool provides its members with the following coverage:

Property - Blanket Building & Grounds	General & Automobile Liability
Boiler & Machinery	Workers' Compensation
School Board Legal Liability	Comprehensive Crime Coverage
Employers Liability	Excess Liability

Note 10. Contingencies

State and Federal Grantor Agencies - The School District participates in numerous state and federal grant programs, which are governed by various rules and regulations of the grantor agencies; therefore, to the extent that the School District has not complied with the rules and regulations governing the grants, refunds of any money received may be required and the collectability of any related receivable at June 30, 2025 may be impaired. In the opinion of the School District, there are no significant contingent liabilities relating to compliance with the rules and regulations governing the respective grants; therefore, no provisions have been recorded in the accompanying combined financial statements for such contingencies.

Litigation – The School District is a defendant in various lawsuits. Although the outcome of these lawsuits is not presently determinable, it is the opinion of the School Districts’ attorney that resolution of these matters will not have a material adverse effect on the financial condition of the School District.

Economic Dependency – The School District receives a substantial amount of its support from federal and state governments. A significant reduction in the level of support, if this were to occur, could have an effect on the School District’s programs and activities.

Note 11. Deferred Compensation

The School District offers its employees a choice of the following deferred compensation plans created in accordance with Internal Revenue Code Section 403(b) and 457. The plans, which are administered by the entities listed below, permits participants to defer a portion of their salary until future years. Amounts deferred under the plans are not available to employees until termination, retirement, death or unforeseeable emergency. The plan administrators are as follows:

Equitable	Northwestern Mutual
Wells Fargo	Valic

**BASS RIVER TOWNSHIP SCHOOL DISTRICT
NOTES TO THE FINANCIAL STATEMENTS
YEAR ENDED JUNE 30, 2025 (Continued)**

Note 12. Compensated Absences

GASB Statement No. 101, *Compensated Absences*, requires that liabilities for compensated absences be recognized for (1) leave that has not been used and (2) leave that has been used but not yet paid in cash or settled through noncash means. The liability should be recognized for leave that has not been used if (a) the leave is attributable to services already rendered, (b) the leave accumulates, and (c) the leave is more likely than not to be used for time off or otherwise paid in cash or settled through noncash means.

School District employees are granted varying amount of vacation and sick leave in accordance with the School District's personnel policies. Upon termination, employees are paid for accrued vacation. The School District policy permits employees to accumulate unused sick leave and carry forward the full amount to subsequent years. Upon retirement employees shall be paid by the School District for the unused sick leave in accordance with School Districts' agreements with the various employee unions. However, a liability is recognized under GASB Statement No. 101 to the extent such leave is expected to be used as time off.

Due to the School District becoming non-operating, there is no longer a compensated absence liability.

Note 13. Tax Abatements

As defined by the Governmental Accounting Standards Board (GASB) Statement No. 77, a tax abatement is an agreement between a government and an individual or entity in which the government promises to forgo tax revenues and the individual or entity promises to subsequently take a specific action that contributes to economic development or otherwise benefits the government or its citizens. School districts are not authorized by New Jersey statute to enter into tax abatement agreements. However, the county or municipality in which the school district is situated may have entered into tax abatement agreements, and that potential must be disclosed in these financial statements. If the county or municipality entered into tax abatement agreements, those agreements will not directly affect the school district's local tax revenue because N.J.S.A. 54:4-75 and N.J.S.A. 54:4-76 require that amounts so forgiven must effectively be recouped from other taxpayers and remitted to the school district. For a local school district board of education or board of school estimate that has elected to raise their minimum tax levy using the required local share provisions at N.J.S.A. 18A:7F-5(b), the loss of revenue resulting from the municipality or county having entered into a tax abatement agreement is indeterminate due to the complex nature of the calculation of required local share performed by the New Jersey Department of Education based upon district property value and wealth.

Note 14. Calculation of Excess Surplus

The designation for Restricted Fund Balance – Excess Surplus is a required calculation pursuant to N.J.S.A.18A:7F-7. New Jersey school districts are required to reserve General Fund fund balance at the fiscal year-end of June 30 if they did not appropriate a required minimum amount as budgeted fund balance in their subsequent years' budget. There was \$479,119.32 in excess fund balance at June 30, 2025.

Note 15. Fund Balances

General Fund – Of the \$1,302,278.18 General Fund fund balance at June 30, 2025, \$338,800.00 has been restricted for tuition reserve, \$250,000.00 has been restricted for emergency reserve, \$282,291.32 has been restricted for current year excess surplus, \$196,828.00 has been restricted for excess surplus designated for subsequent year, \$8,005.86 has been restricted for unemployment claims, \$933.00 has been assigned - designated for subsequent year's expenditures, \$225,420.00 is unassigned.

REQUIRED SUPPLEMENTARY INFORMATION - PART II

This page intentionally left blank

C. Budgetary Comparison Schedules

This page intentionally left blank

**BASS RIVER TOWNSHIP SCHOOL DISTRICT
GENERAL FUND
BUDGETARY COMPARISON SCHEDULE
YEAR ENDED JUNE 30, 2025**

ACCOUNT NUMBERS	ORIGINAL BUDGET	BUDGET TRANSFERS	JUNE 30, 2025		VARIANCE FINAL TO ACTUAL
			BUDGET	FINAL BUDGET	
Revenues:					
Local Sources:					
Local Tax Levy	\$ 1,078,022.00	\$ -	\$ 1,078,022.00	\$ 1,078,022.00	\$ -
Unrestricted Miscellaneous Revenues	-	-	-	8,541.29	8,541.29
Total Local Sources	1,078,022.00	-	1,078,022.00	1,086,563.29	8,541.29
State Sources:					
Categorical Transportation Aid	102,864.00	-	102,864.00	102,864.00	-
Categorical Special Education Aid	88,200.00	-	88,200.00	88,200.00	-
Equalization Aid	23,130.00	-	23,130.00	23,130.00	-
Categorical Security Aid	31,588.00	-	31,588.00	31,588.00	-
Other State Aids	-	3,736.00	3,736.00	3,736.00	-
Stabilized School Budget Aid	-	207,451.00	207,451.00	207,451.00	-
Total State Sources	245,782.00	211,187.00	456,969.00	456,969.00	-
Total Revenues	1,323,804.00	211,187.00	1,534,991.00	1,543,532.29	8,541.29
Undistributed Expenditures - Instruction (Tuition):					
Tuition to Other LEAs Within State - Regular	1,140,486.00	68,000.00	1,208,486.00	1,208,317.00	169.00
Tuition to Other LEAs Within State - Special	606,413.00	139,451.00	745,864.00	379,795.55	366,068.45
Total Undistributed Expenditures - Instruction (Tuition)	1,746,899.00	207,451.00	1,954,350.00	1,588,112.55	366,237.45
Undistributed Expenditures - Support Services - General Administration:					
Legal Services	25,000.00	(5,600.00)	19,400.00	-	19,400.00
Audit Fees	20,000.00	2,000.00	22,000.00	22,000.00	-
Other Purchased Services	2,000.00	1,600.00	3,600.00	3,595.10	4.90
General Supplies	1,500.00	-	1,500.00	73.00	1,427.00
Total Undistributed Expenditures - Support Services - General Administration	48,500.00	(2,000.00)	46,500.00	25,668.10	20,831.90

**BASS RIVER TOWNSHIP SCHOOL DISTRICT
GENERAL FUND
BUDGETARY COMPARISON SCHEDULE
YEAR ENDED JUNE 30, 2025**

	ACCOUNT NUMBERS	JUNE 30, 2025			VARIANCE FINAL TO ACTUAL
		ORIGINAL BUDGET	BUDGET TRANSFERS	FINAL BUDGET	
Undistributed Expenditures - Central Services:					
Purchased Professional Services	11-000-251-330	54,260.00	-	54,260.00	12,101.20
Miscellaneous Expenditures	11-000-251-890	-	2,000.00	2,000.00	160.15
Total Undistributed Expenditures - Central Services		54,260.00	2,000.00	56,260.00	12,261.35
Undistributed Expenditures - Custodial Services:					
Insurance	11-000-262-520	8,000.00	500.00	8,500.00	183.75
Total Undistributed Expenditures - Custodial Services		8,000.00	500.00	8,500.00	183.75
Undistributed Expenditures - Student Transportation Services:					
Other Purchased Prof. and Technical Serv.	11-000-270-390	10,650.00	-	10,650.00	8,928.23
Contract Services - Aid in Lieu Payments - Non Public Schools	11-000-270-503	15,000.00	-	15,000.00	4,995.50
Contract Services (Between Home & School) - Joint Agreement	11-000-270-513	123,919.00	13,000.00	136,919.00	732.80
Contract Serv.(Sp Ed Stds)-Joint Agrmnts	11-000-270-515	37,034.00	(23,000.00)	14,034.00	14,034.00
Contract Services (Special Education) - ESCs & CTSAs	11-000-270-518	12,697.00	(500.00)	12,197.00	12,197.00
Total Undistributed Expenditures - Student Transportation Services		199,300.00	(10,500.00)	188,800.00	33,681.07
Unallocated Benefits:					
Unemployment Compensation	11-000-291-250	-	10,000.00	10,000.00	663.54
Total Unallocated Benefits		-	10,000.00	10,000.00	663.54
Total Undistributed Expenditures		2,056,959.00	207,451.00	2,264,410.00	433,859.06
Total Expenditures - Current Expense		2,056,959.00	207,451.00	2,264,410.00	433,859.06
Total Expenditures		2,056,959.00	207,451.00	2,264,410.00	433,859.06
Excess/(Deficiency) of Revenues Over/ (Under) Expenditures Before Other Financing Sources/(Uses)		(733,155.00)	3,736.00	(729,419.00)	442,400.35

**BASS RIVER TOWNSHIP SCHOOL DISTRICT
GENERAL FUND
BUDGETARY COMPARISON SCHEDULE
YEAR ENDED JUNE 30, 2025**

ACCOUNT NUMBERS	JUNE 30, 2025			VARIANCE FINAL TO ACTUAL
	ORIGINAL BUDGET	BUDGET TRANSFERS	FINAL BUDGET	
Excess/(Deficiency) of Revenues Over/ (Under) Expenditures After Other Financing Sources/(Uses) Fund Balances, July 1	(733,155.00) 1,613,876.83	3,736.00 -	(729,419.00) 1,613,876.83	(287,018.65) 1,613,876.83
Fund Balances, June 30	\$ 880,721.83	\$ 3,736.00	\$ 884,457.83	\$ 1,326,858.18
				\$ 442,400.35

RECAPITULATION OF FUND BALANCE

Restricted Fund Balance:	
Tuition Reserve - Prior Year	\$ 180,000.00
Tuition Reserve - Current Year	158,800.00
Emergency Reserve	250,000.00
Excess Surplus	282,291.32
Excess Surplus Designated for Subsequent Year's Expenditures	196,828.00
Reserve for Unemployment Claims	8,005.86
Assigned Fund Balance:	
Designated for Subsequent Year's Expenditures	933.00
Unassigned Fund Balance	250,000.00
Subtotal	1,326,858.18
Reconciliation to Governmental Funds Statements (GAAP):	
Last State Aid Payments Not Recognized on GAAP Basis	(24,580.00)
Fund Balance per Governmental Funds (GAAP)	\$ 1,302,278.18

This page intentionally left blank

NOTES TO REQUIRED SUPPLEMENTARY INFORMATION - PART II

This page intentionally left blank

**BASS RIVER TOWNSHIP SCHOOL DISTRICT
NOTE TO REQUIRED SUPPLEMENTARY INFORMATION
BUDGET TO GAAP RECONCILIATION
YEAR ENDED JUNE 30, 2025**

**Note A - Explanation of Differences between Budgetary Inflows and Outflows and
GAAP Revenues and Expenditures**

	GENERAL FUND	SPECIAL REVENUE FUND
Sources/Inflows of Resources:		
Actual Amounts (Budgetary Basis) "Revenue"		
From the Budgetary Comparison Schedule (C-Series)	\$ 1,543,532.29	\$ -
Difference - Budget to GAAP:		
The last state aid payments are recognized as revenue for budgetary purposes and differs from GAAP which does not recognize this revenue until the subsequent year when the state recognizes the related expense (GASB 33).		
Current Year	(24,580.00)	-
Prior Year	62,457.00	-
Total Revenues as Reported on the Statement of Revenues, Expenditures, and Changes in Fund Balances - Governmental Funds. (B-2)	\$ 1,581,409.29	\$ -
Uses/outflows of resources:		
Actual amounts (budgetary basis) "total outflows" from the budgetary comparison schedule. (C-1, C-2)	\$ 1,830,550.94	\$ -
Total Expenditures as Reported on the Statement of Revenues, Expenditures, and Changes in Fund Balances - Governmental Funds (B-2)	\$ 1,830,550.94	\$ -

This page intentionally left blank

REQUIRED SUPPLEMENTARY INFORMATION - PART III

This page intentionally left blank

SCHEDULES RELATED TO ACCOUNTING AND REPORTING FOR PENSIONS (GASB 68)

This page intentionally left blank

BASS RIVER TOWNSHIP SCHOOL DISTRICT
 SCHEDULE OF THE SCHOOL DISTRICT'S PROPORTIONATE SHARE OF THE NET PENSION LIABILITY
 PUBLIC EMPLOYEES' RETIREMENT SYSTEM (PERS)
 LAST TEN FISCAL YEARS*

	2025	2024	2023	2022	2021	2020	2019	2018	2017	2016
School District's proportion of the net pension liability	0.00000%	0.00000%	0.00000%	0.23336%	0.00283%	0.00289%	0.00002%	0.00241%	0.00213%	0.00257%
School District's proportionate share of the net pension liability	\$ -	\$ -	\$ -	\$ 276,448.00	\$ 461,010.00	\$ 520,175.00	\$ 450,314.00	\$ 560,731.00	\$ 632,125.00	\$ 576,963.00
	\$ -	\$ -	\$ -	\$ 276,448.00	\$ 461,010.00	\$ 520,175.00	\$ 450,314.00	\$ 560,731.00	\$ 632,125.00	\$ 576,963.00
School District's covered payroll	\$ -	\$ -	\$ -	\$ -	\$ 207,366.00	\$ 203,257.00	\$ 204,303.00	\$ 161,580.00	\$ 327,767.00	N/A
School District's proportionate share of the net pension liability as a percentage of its covered payroll	0%	0%	0%	#DIV/0!	222%	256%	220%	347%	193%	N/A
Plan fiduciary net position as a percentage of the total pension liability	68.22%	65.23%	62.91%	70.33%	58.32%	56.27%	53.60%	48.10%	40.14%	47.93%

*The amounts presented for each fiscal year were determined as of the previous fiscal year end (the measurement date).

BASS RIVER TOWNSHIP SCHOOL DISTRICT
 SCHEDULE OF SCHOOL DISTRICT CONTRIBUTIONS
 PUBLIC EMPLOYEES' RETIREMENT SYSTEM (PERS)
 LAST TEN FISCAL YEARS

	2025	2024	2023	2022	2021	2020	2019	2018	2017	2016
School District's contractually required contribution	\$ -	\$ -	\$ -	\$ -	\$ 27,329.00	\$ 30,926.00	\$ 28,081.00	\$ 22,749.00	\$ 22,315.00	\$ 18,961.00
Contributions in relation to the contractually required contribution	-	-	-	-	(27,329.00)	(30,926.00)	(28,081.00)	(22,749.00)	(22,315.00)	(18,961.00)
Contribution deficiency (excess)	\$ -	\$ -	\$ -	\$ -	\$ -	\$ -	\$ -	\$ -	\$ -	\$ -
District's covered payroll	\$ -	\$ -	\$ -	\$ -	\$ -	\$ 207,366.00	\$ 203,257.00	\$ 204,303.00	\$ 161,580.00	\$ 327,767.00
Contributions as a percentage of employee payroll	0.00%	0.00%	0.00%	0.00%	#DIV/0!	14.91%	13.82%	11.13%	13.81%	5.78%

BASS RIVER TOWNSHIP SCHOOL DISTRICT
 SCHEDULE OF THE DISTRICT'S PROPORTIONATE SHARE OF THE NET PENSION LIABILITY
 TEACHERS' PENSION AND ANNUITY FUND (TPAF)
 LAST TEN FISCAL YEARS*

	2025	2024	2023	2022	2021	2020	2019	2018	2017	2016
School District's proportion of the net pension liability	0.00%	0.00%	0.00%	0.00%	0.00%	0.00%	0.00%	0.00%	0.00%	0.00%
School District's proportionate share of the net pension liability	\$ -	\$ -	\$ -	\$ -	\$ -	\$ -	\$ -	\$ -	\$ -	\$ -
State's proportionate share of the net pension liability associated with the School District	0.00	-	4,301,753.00	4,419,200.00	5,644,447.00	5,962,450.00	7,119,613.00	7,447,585.00	9,073,138.00	6,338,470.00
	\$ -	\$ -	\$ 4,301,753.00	\$ 4,419,200.00	\$ 5,644,447.00	\$ 5,962,450.00	\$ 7,119,613.00	\$ 7,447,585.00	\$ 9,073,138.00	\$ 6,338,470.00
District's covered payroll	\$ -	\$ -	\$ -	\$ -	\$ 1,053,940.00	\$ 943,509.00	\$ 1,070,327.00	\$ 1,132,248.00	\$ 1,706,366.00	\$ 1,706,965.00
District's proportionate share of the net pension liability as a percentage of its covered payroll	0.00%	0.00%	0.00%	0.00%	0.00%	0.00%	0.00%	0.00%	0.00%	0.00%
Plan fiduciary net position as a percentage of the total pension liability	34.68%	32.29%	35.52%	24.60%	26.95%	26.49%	25.41%	22.33%	28.71%	33.76%

*The amounts presented for each fiscal year were determined as of the previous fiscal year end (the measurement date).

This page intentionally left blank

**SCHEDULES RELATED TO ACCOUNTING AND REPORTING FOR OTHER POST EMPLOYMENT BENEFITS
(GASB 75)**

This page intentionally left blank

**BASS RIVER TOWNSHIP SCHOOL DISTRICT
SCHEDULE OF CHANGES IN THE NET OPEB LIABILITY AND RELATED RATIOS
STATE HEALTH BENEFIT LOCAL EDUCATION RETIRED EMPLOYEES PLAN (OPEB)
LAST EIGHT FISCAL YEARS***

	2025	2024	2023	2022	2021	2020	2019	2018
District's Total OPEB Liability								
Service Cost	\$ 116,371	\$ -	\$ 268,434	\$ 371,074	\$ 215,666	\$ 215,525	\$ 278,633	\$ 333,268
Interest Cost	-	105,201	78,709	205,657	216,952	261,430	293,400	251,984
Change in Benefit Terms	-	-	-	(8,438)	-	-	-	-
Difference Between Expected and Actual	253,148	(14,885)	(4,432,781)	(2,659,178)	1,981,372	(947,921)	(1,012,576)	-
Changes of Assumptions	264,482	6,021	(796,738)	7,821	1,857,285	90,475	(760,744)	(1,001,935)
Contributions: Member	3,043	2,696	2,501	5,258	5,365	5,522	6,127	6,825
Gross Benefit Payments	(88,875)	(82,006)	(77,964)	(162,000)	(177,011)	(186,271)	(177,265)	(185,337)
Net Change in District's Total OPEB Liability	548,169	17,027	(4,957,839)	(2,239,806)	4,099,629	(561,240)	(1,372,425)	(595,195)
District's Total OPEB Liability (Beginning)	2,987,060	2,970,033	7,927,872	10,167,678	6,068,049	6,629,289	8,001,714	8,596,909
District's Total OPEB Liability (Ending)	\$ 3,535,229	\$ 2,987,060	\$ 2,970,033	\$ 7,927,872	\$ 10,167,678	\$ 6,068,049	\$ 6,629,289	\$ 8,001,714
District's Covered Employee Payroll	\$ -	\$ -	\$ -	\$ -	\$ -	\$ 1,261,306	\$ 1,146,776	\$ 1,413,527
District's Net OPEB Liability as a Percentage of Payroll	0%	0%	0%	0%	0%	481%	578%	566%

Note - The amounts presented for each fiscal year were determined as of the previous fiscal year end (the measurement date).

* This schedule is presented to illustrate the requirement to show information for 10 years. However, until a full 10-year trend is compiled, governments should present information for those years for which information is available.

This page intentionally left blank

NOTES TO REQUIRED SUPPLEMENTARY INFORMATION - PART III

This page intentionally left blank

**BASS RIVER TOWNSHIP SCHOOL DISTRICT
NOTES TO REQUIRED SUPPLEMENTARY INFORMATION - PART III
YEAR ENDED JUNE 30, 2025**

Public Employees' Retirement System (PERS)

Changes in Benefit Terms

None

Changes in Assumptions

The discount rate used as of June 30, measurement date is as follows:

<u>Year</u>	<u>Rate</u>	<u>Year</u>	<u>Rate</u>	<u>Year</u>	<u>Rate</u>
2024	7.00%	2020	7.00%	2016	3.98%
2023	7.00%	2019	6.28%	2015	4.90%
2022	7.00%	2018	5.66%	2014	5.39%
2021	7.00%	2017	5.00%		

The long-term expected rate of return used as of June 30, measurement date is as follows:

<u>Year</u>	<u>Rate</u>	<u>Year</u>	<u>Rate</u>	<u>Year</u>	<u>Rate</u>
2024	7.00%	2020	7.00%	2016	7.65%
2023	7.00%	2019	7.00%	2015	7.90%
2022	7.00%	2018	7.00%	2014	7.90%
2021	7.00%	2017	7.00%		

The mortality assumption was updated upon the direction from the Division of Pensions and Benefits.

Teachers Pension and Annuity Fund (TPAF)

Changes in Benefit Terms

None.

Changes in Assumptions

The discount rate used as of June 30, measurement date is as follows:

<u>Year</u>	<u>Rate</u>	<u>Year</u>	<u>Rate</u>	<u>Year</u>	<u>Rate</u>
2024	7.00%	2020	5.40%	2016	3.22%
2023	7.00%	2019	5.60%	2015	4.13%
2022	7.00%	2018	4.86%	2014	4.68%
2021	7.00%	2017	4.25%		

The long-term expected rate of return used as of June 30, measurement date is as follows:

<u>Year</u>	<u>Rate</u>	<u>Year</u>	<u>Rate</u>	<u>Year</u>	<u>Rate</u>
2024	7.00%	2020	7.30%	2016	7.65%
2023	7.00%	2019	7.00%	2015	7.90%
2022	7.00%	2018	7.00%	2014	7.90%
2021	7.00%	2017	7.00%		

The mortality assumption was updated upon the direction from the Division of Pensions and Benefits.

State Health Benefit Local Education Retired Employees Plan (OPEB)

Changes in Benefit Terms

None.

Changes in Assumptions

The discount rate used as of June 30, measurement date is as follows:

<u>Year</u>	<u>Rate</u>	<u>Year</u>	<u>Rate</u>	<u>Year</u>	<u>Rate</u>
2024	3.93%	2021	2.16%	2018	3.87%
2023	3.65%	2020	2.21%	2017	2.21%
2022	3.54%	2019	3.50%	2016	2.85%

This page intentionally left blank

OTHER SUPPLEMENTARY INFORMATION

This page intentionally left blank

STATISTICAL SECTION (Unaudited)

Third Section

This page intentionally left blank

Financial Trends Information

Financial trends information is intended to assist the user in understanding and assessing how the School District's financial position has changed over time. Please refer to the following exhibits for a historical view of the School District's financial performance. The Exhibits are presented for the last ten fiscal years.

This page intentionally left blank

BASS RIVER TOWNSHIP SCHOOL DISTRICT
NET POSITION BY COMPONENT
LAST TEN FISCAL YEARS
(Accrual Basis of Accounting)
UNAUDITED

	FISCAL YEAR ENDING JUNE 30,									
	2025	2024	2023	2022	2021	2020	2019	2018	2017	2016
Governmental Activities:										
Net Investment in Capital Assets	\$ -	\$ -	\$ -	\$ 142,301.87	\$ 164,456.87	\$ 473,897.29	\$ 268,716.36	\$ 140,389.32	\$ 318,704.00	\$ 318,673.00
Restricted	1,075,925.18	1,359,781.83	1,414,649.00	809,693.72	429,408.32	42,123.35	146,577.86	256,096.80	-	-
Unrestricted (Deficit)	22,567.00	(118,333.00)	(195,901.77)	(255,443.82)	(332,984.00)	(384,880.29)	(448,881.92)	(590,728.74)	(510,512.00)	(563,329.00)
Total Governmental Activities	\$ 1,098,492.18	\$ 1,241,448.83	\$ 1,218,747.23	\$ 696,551.77	\$ 260,881.19	\$ 131,140.35	\$ (33,587.70)	\$ (194,242.62)	\$ (191,808.00)	\$ (244,656.00)
District-Wide:										
Net Investment in Capital Assets	\$ -	\$ -	\$ -	\$ 142,301.87	\$ 164,456.87	\$ 473,897.29	\$ 268,716.36	\$ 140,389.32	\$ 318,704.00	\$ 318,673.00
Restricted	1,075,925.18	1,359,781.83	1,414,649.00	809,693.72	429,408.32	42,123.35	146,577.86	256,096.80	-	-
Unrestricted (Deficit)	22,567.00	(118,333.00)	(195,901.77)	(255,443.82)	(332,984.00)	(384,880.29)	(448,881.92)	(590,728.74)	(510,512.00)	(536,329.00)
Total District Net Position	\$ 1,098,492.18	\$ 1,241,448.83	\$ 1,218,747.23	\$ 696,551.77	\$ 260,881.19	\$ 131,140.35	\$ (33,587.70)	\$ (194,242.62)	\$ (191,808.00)	\$ (217,656.00)

Source: ACFR Schedule A-1

BASS RIVER TOWNSHIP SCHOOL DISTRICT
CHANGES IN NET POSITION - (ACCRUAL BASIS OF ACCOUNTING)
LAST TEN FISCAL YEARS
UNAUDITED

	2025	2024	2023	2022	2021	2020	2019	2018	2017	2016
FISCAL YEAR ENDING JUNE 30,										
Expenses:										
Governmental Activities										
Instruction:										
Regular	\$ -	\$ -	\$ -	\$ 496,294.84	\$ 1,074,577.18	\$ 1,484,852.76	\$ 1,793,993.53	\$ 1,949,690.82	\$ 800,406.00	\$ 862,319.00
Special Education	-	-	-	-	-	306,933.69	317,361.72	452,258.45	306,383.00	295,630.00
Other Special Education	-	-	-	-	-	-	-	-	39,780.00	44,001.00
Other Instruction	-	-	-	-	-	120,196.68	83,065.42	54,522.25	21,867.00	23,746.00
Support Services:										
Tuition	1,588,112.55	1,527,434.38	1,187,318.80	854,428.80	926,710.00	37,375.98	-	51,659.09	45,402.00	2,822.00
Student & Instruction Related Services	-	-	2,200.75	25,842.46	29,942.46	438,103.66	339,615.88	353,046.95	273,761.00	304,051.00
Other Administrative Services	15,003.59	13,717.89	51,435.38	45,549.32	42,030.67	210,491.60	137,466.78	158,906.51	146,548.00	145,591.00
Central Services	25,718.21	26,063.54	36,319.52	52,074.12	61,997.28	57,071.90	47,990.15	55,322.55	-	-
School Administrative Services	-	-	-	-	-	29,035.94	86,643.91	99,025.50	68,108.00	66,317.00
Plant Operations & Maintenance	4,861.04	4,883.53	46,526.63	164,345.06	396,885.22	122,390.31	217,205.57	194,712.37	165,777.00	101,276.00
Pupil Transportation	90,670.55	88,673.17	92,147.28	95,957.83	114,171.96	100,921.55	120,859.78	184,847.46	90,283.00	84,454.00
Unallocated Benefits	-	-	-	-	-	-	-	-	741,463.00	1,020,818.00
Interest & Other Charges	-	-	-	-	-	-	(1,265.18)	14,588.40	9,374.00	3,870.00
Unallocated Adjustment to Fixed Assets	-	-	-	-	-	-	-	-	-	68,716.00
Unallocated Depreciation	-	-	-	-	-	-	-	-	38,772.00	49,602.00
Total Governmental Activities	1,724,365.94	1,660,772.51	1,415,948.36	1,734,492.43	2,646,314.77	2,907,374.08	3,142,937.56	3,568,580.35	2,747,924.00	3,073,213.00
Expenses	\$ 1,724,365.94	\$ 1,660,772.51	\$ 1,415,948.36	\$ 1,734,492.43	\$ 2,646,314.77	\$ 2,907,374.08	\$ 3,142,937.56	\$ 3,568,580.35	\$ 2,747,924.00	\$ 3,073,213.00
Total District Expenses										
Program Revenues:										
Operating Grants & Contributions	\$ -	\$ -	\$ -	\$ 403,888.00	\$ 807,767.00	\$ 619,100.67	\$ 898,110.24	\$ 1,205,750.00	\$ 423,169.00	\$ 708,862.00
Total Governmental Activities	-	-	-	403,888.00	807,767.00	619,100.67	898,110.24	1,205,750.00	423,169.00	708,862.00
Total District Program Revenues	\$ -	\$ -	\$ -	\$ 403,888.00	\$ 807,767.00	\$ 619,100.67	\$ 898,110.24	\$ 1,205,750.00	\$ 423,169.00	\$ 708,862.00
Net (Expense)/Revenue:										
Governmental Activities	\$ (1,724,365.94)	\$ (1,660,772.51)	\$ (1,415,948.36)	\$ (1,330,604.43)	\$ (1,838,547.77)	\$ (2,288,273.41)	\$ (2,244,827.32)	\$ (2,362,830.35)	\$ (2,324,755.00)	\$ (2,364,351.00)
Total District-Wide Net Expense	\$ (1,724,365.94)	\$ (1,660,772.51)	\$ (1,415,948.36)	\$ (1,330,604.43)	\$ (1,838,547.77)	\$ (2,288,273.41)	\$ (2,244,827.32)	\$ (2,362,830.35)	\$ (2,324,755.00)	\$ (2,364,351.00)

**BASS RIVER TOWNSHIP SCHOOL DISTRICT
CHANGES IN NET POSITION - (ACCURAL BASIS OF ACCOUNTING)
LAST TEN FISCAL YEARS
UNAUDITED**

	FISCAL YEAR ENDING JUNE 30,									
	2025	2024	2023	2022	2021	2020	2019	2018	2017	2016
General Revenues & Other Changes in Net Position:										
Governmental Activities:										
Property Taxes Levied for General Purposes, Net	\$ 1,078,022.00	\$ 1,056,884.00	\$ 1,056,884.00	\$ 1,106,885.00	\$ 1,156,885.00	\$ 1,565,430.00	\$ 1,514,402.00	\$ 1,484,708.00	\$ 1,455,596.00	\$ 1,427,055.00
Grants & Contributions	494,846.00	618,671.00	534,757.00	616,887.00	763,002.00	864,549.00	889,634.00	875,354.00	869,142.00	852,404.00
Tuition Received	-	-	-	-	-	-	-	-	-	-
Investment Earnings	-	-	-	-	-	-	-	-	-	329.00
Miscellaneous Income	8,541.29	7,919.11	14,081.97	42,503.01	62,646.51	2,282.87	1,446.24	-	29,735.00	36,409.00
Transfers/Cancellations	-	-	-	-	-	-	-	333.28	-	-
Total Governmental Activities	1,581,409.29	1,683,474.11	1,605,722.97	1,766,275.01	1,982,533.51	2,432,261.87	2,405,482.24	2,360,395.28	2,354,473.00	2,316,197.00
Total District-Wide	\$ 1,581,409.29	\$ 1,683,474.11	\$ 1,605,722.97	\$ 1,766,275.01	\$ 1,982,533.51	\$ 2,432,261.87	\$ 2,405,482.24	\$ 2,360,395.28	\$ 2,354,473.00	\$ 2,316,197.00
Change in Net Position:										
Governmental Activities	\$ (142,956.65)	\$ 22,701.60	\$ 189,774.61	\$ 435,670.58	\$ 143,985.74	\$ 143,988.46	\$ 160,654.92	\$ (2,435.07)	\$ 29,718.00	\$ (48,154.00)
Total District	\$ (142,956.65)	\$ 22,701.60	\$ 189,774.61	\$ 435,670.58	\$ 143,985.74	\$ 143,988.46	\$ 160,654.92	\$ (2,435.07)	\$ 29,718.00	\$ (48,154.00)

Source: ACFR Schedule A-2

**BASS RIVER TOWNSHIP SCHOOL DISTRICT
FUND BALANCES - GOVERNMENTAL FUNDS
LAST TEN FISCAL YEARS
(Modified Accrual Basis of Accounting)
UNAUDITED**

	2025	2024	2023	2022	2021	2020	2019	2018	2017	2016
General Fund:										
Restricted	\$ 1,075,925.18	\$ 1,359,781.83	\$ 1,414,649.00	\$ 806,130.21	\$ 425,853.17	\$ 42,123.35	\$ -	\$ -	\$ -	\$ -
Assigned	933.00	-	2,071.23	37,286.78	44,935.44	66,645.25	75,369.52	37,426.15	75,974.00	55,668.00
Reserved	-	-	-	-	-	-	171,974.79	-	-	-
Unreserved/Unassigned	225,420.00	191,638.00	200,649.00	192,629.00	172,964.00	172,267.00	-	-	21,384.00	(3,539.00)
Total General Fund	\$ 1,302,278.18	\$ 1,551,419.83	\$ 1,617,369.23	\$ 1,036,045.99	\$ 643,752.61	\$ 281,035.60	\$ 247,344.31	\$ 37,426.15	\$ 97,358.00	\$ 52,129.00
All Other Governmental Funds:										
Restricted	\$ -	\$ -	\$ -	\$ -	\$ -	\$ -	\$ 146,577.86	\$ -	\$ -	\$ -
Capital Projects Fund	-	-	-	3,563.51	3,555.15	-	-	-	-	-
Unreserved, Reported in:	-	-	-	-	-	-	-	256,096.80	369,000.00	-
Special Revenue Fund	-	-	-	-	-	-	-	-	-	-
Capital Projects Fund	-	-	-	-	-	-	-	-	-	-
Total All Other Governmental Funds	\$ -	\$ -	\$ -	\$ 3,563.51	\$ 3,555.15	\$ -	\$ 146,577.86	\$ 256,096.80	\$ 369,000.00	\$ -

Source: ACFR Schedule B-1

BASS RIVER TOWNSHIP SCHOOL DISTRICT
CHANGES IN FUND BALANCES - GOVERNMENTAL FUNDS
LAST TEN FISCAL YEARS
(Modified Accrual Basis of Accounting)
UNAUDITED

	<u>2025</u>	<u>2024</u>	<u>2023</u>	<u>2022</u>	<u>2021</u>	<u>2020</u>	<u>2019</u>	<u>2018</u>	<u>2017</u>	<u>2016</u>
Revenues										
Tax Levy	\$ 1,078,022.00	\$ 1,056,884.00	\$ 1,056,884.00	\$ 1,106,885.00	\$ 1,156,885.00	\$ 1,565,430.00	\$ 1,514,402.00	\$ 1,484,708.00	\$ 1,455,596.00	\$ 1,427,055.00
Miscellaneous	8,541.29	7,919.11	17,666.07	42,503.01	62,646.51	24,282.87	25,307.79	24,024.28	29,735.00	36,738.00
State Sources	494,846.00	618,671.00	534,757.00	1,046,368.00	1,120,726.00	1,202,378.99	1,238,940.50	1,219,763.46	1,197,537.00	1,171,885.00
Federal Sources	-	-	-	-	-	79,474.68	125,288.19	120,796.00	94,774.00	94,704.00
Total Revenues	1,581,409.29	1,683,474.11	1,609,307.07	2,195,756.01	2,340,257.51	2,871,566.54	2,903,938.48	2,849,291.74	2,777,642.00	2,730,382.00
Expenditures										
Instruction:										
Regular Instruction	-	-	-	91,367.08	248,597.76	830,335.03	947,855.77	961,354.56	800,406.00	862,319.00
Special Education Instruction	-	-	-	-	-	171,638.43	167,677.94	222,999.83	306,383.00	316,680.00
Other Special Instruction	-	-	-	-	-	-	-	-	39,780.00	44,001.00
Other Instruction	-	-	-	-	-	67,214.42	43,887.58	26,883.86	21,867.00	23,746.00
Support Services:										
Tuition	1,588,112.55	1,527,434.38	1,187,318.80	854,428.80	926,710.00	37,375.98	-	51,659.00	45,402.00	2,822.00
Attendance & Social Work Services	-	-	-	-	-	16,611.76	-	-	-	-
Health Services	-	-	-	-	-	60,290.91	63,303.83	16,419.33	-	-
Student & Instruction Related Services	-	-	2,849.40	25,551.68	27,898.59	259,033.59	182,603.02	63,205.63	-	-
Other Administrative Services	25,668.10	22,838.35	66,595.53	45,036.80	39,161.66	161,404.18	110,263.79	187,059.18	273,761.00	283,001.00
Central Services	43,998.65	43,392.11	47,024.39	51,488.19	57,765.36	43,762.52	38,493.49	37,966.65	-	-
General Administration Services	-	-	-	-	-	-	-	109,054.05	146,548.00	145,591.00
School Administrative Services	-	-	-	-	-	22,264.65	69,498.14	67,959.03	68,108.00	66,317.00
Plant Operations & Maintenance	8,316.25	8,130.39	62,212.64	183,768.62	130,922.76	182,361.83	243,045.24	195,604.28	211,093.00	201,760.00
Pupil Transportation	155,118.93	147,628.28	119,306.92	94,878.12	106,378.60	77,386.27	96,943.11	138,443.91	90,283.00	84,454.00
Unallocated Benefits	9,336.46	-	17,378.28	456,934.98	443,045.31	832,826.16	789,255.98	830,614.19	728,782.00	712,295.00
Capital Outlay	-	-	-	-	-	145,776.10	109,518.94	112,903.20	80,000.00	190,000.00
Total Expenditures	1,830,550.94	1,749,423.51	1,502,685.96	1,803,454.27	1,980,480.04	2,908,281.83	2,862,346.83	3,022,126.70	2,812,413.00	2,932,986.00
Other Financing Sources/(Uses):										
Capital Leases (Non-budgeted)	-	-	-	-	-	-	-	-	-	449,000.00
Cancellation of Unexpended Balance	-	-	-	-	-	-	(801.76)	-	-	-
Proceeds on Sale of Building	-	-	474,722.72	-	-	-	-	-	-	-
Transfers to Receiving District	-	-	(3,584.10)	-	-	-	-	-	-	-
Total Other Financing Sources/(Uses)	-	-	471,138.62	-	-	-	(801.76)	-	-	449,000.00
Net Change in Fund Balances	\$ (249,141.65)	\$ (65,949.40)	\$ 577,759.73	\$ 392,301.74	\$ 359,777.47	\$ (36,715.29)	\$ 40,789.89	\$ (172,834.96)	\$ (34,771.00)	\$ 246,396.00
Debt Service as a Percentage of Noncapital Expenditures	0.00%	0.00%	0.00%	0.00%	0.00%	0.00%	0.00%	0.00%	0.00%	0.00%

Source: ACFR Schedule B-2

**BASS RIVER TOWNSHIP SCHOOL DISTRICT
GENERAL FUND - OTHER LOCAL REVENUE BY SOURCE
LAST TEN FISCAL YEARS
(Modified Accrual Basis of Accounting)
UNAUDITED**

FISCAL YEAR ENDING JUNE 30,	INTEREST	TUITION FROM OTHER LEA's	MISCELLANEOUS	TOTAL
2025	\$ -	\$ -	\$ 8,541.29	\$ 8,541.29
2024	7,919.11	-	-	7,919.11
2023	5,279.98	-	12,365.50	17,645.48
2022	2,254.10	-	40,240.55	42,494.65
2021	960.98	-	61,680.39	62,641.37
2020	-	-	2,282.87	2,282.87
2019	716.52	-	729.72	1,446.24
2018	-	-	333.28	333.28
2017	299.00	-	6,035.00	6,334.00
2016	329.00	-	3,129.00	3,458.00
Total	\$ 17,758.69	\$ -	\$ 135,337.60	\$ 153,096.29

Source: District Records

Revenue Capacity Information

Revenue capacity information is intended to assist users in understanding and assessing the factors affecting the School District's ability to generate revenues. Please refer to the following exhibits for a historical view of these factors and how they relate to the School District's ability to generate revenues.

This page intentionally left blank

**BASS RIVER TOWNSHIP SCHOOL DISTRICT
 ASSESSED VALUE AND ACTUAL VALUE OF TAXABLE PROPERTY,
 LAST TEN FISCAL YEARS
 UNAUDITED**

<u>FISCAL YEAR ENDED JUNE 30,</u>	<u>VACANT LAND</u>	<u>RESIDENTIAL</u>	<u>FARM REG.</u>	<u>QFARM</u>	<u>COMMERCIAL</u>	<u>TOTAL ASSESSED VALUE</u>	<u>PUBLIC UTILITIES</u>	<u>NET VALUATION TAXABLE</u>	<u>TOTAL DIRECT SCHOOL TAX RATE</u>	<u>ACTUAL (COUNTY EQUALIZED) VALUE</u>
2025	N/A	N/A	N/A	N/A	N/A	N/A	N/A	N/A	N/A	\$ 225,788,008.00
2024	N/A	N/A	N/A	N/A	N/A	N/A	N/A	N/A	N/A	225,788,008.00
2023	N/A	N/A	N/A	N/A	N/A	N/A	N/A	N/A	N/A	225,788,008.00
2022	6,983,300.00	118,358,400.00	8,069,700.00	824,700.00	39,767,800.00	174,003,900.00	90.00	174,003,990.00	0.607	193,968,872.00
2021	6,936,200.00	118,011,900.00	7,669,600.00	787,400.00	39,767,800.00	173,172,900.00	96.00	173,172,996.00	0.639	192,009,077.00
2020	7,266,800.00	117,216,200.00	5,639,100.00	806,300.00	39,847,800.00	170,776,200.00	98.00	170,776,298.00	0.677	177,337,793.00
2019	7,708,900.00	116,334,300.00	5,639,100.00	697,300.00	40,009,100.00	170,388,700.00	-	170,388,700.00	0.919	173,282,616.00
2018	7,864,800.00	117,183,100.00	6,462,200.00	741,100.00	40,009,100.00	172,260,300.00	-	172,260,300.00	0.879	176,405,937.00
2017	8,476,600.00	116,194,500.00	6,027,700.00	700,100.00	39,084,100.00	170,483,000.00	-	170,483,000.00	0.867	190,269,922.00
2016	8,666,300.00	117,283,100.00	5,093,100.00	707,180.00	27,354,100.00	159,103,780.00	-	159,103,780.00	0.883	177,090,274.00

Source: Burlington County Board of Taxation

Real property is required to be assessed at some percentage of true value (fair or market value) established by each county board of taxation. Reassessment occurs when ordered by the County Board of Taxation

- a. Taxable Value of Machinery, Implements and Equipment of Telephone, Telegraph and Messenger System Companies
- b. Tax rates are per \$100

**BASS RIVER TOWNSHIP SCHOOL DISTRICT
DIRECT AND OVERLAPPING PROPERTY TAX RATES
LAST TEN FISCAL YEARS
(Rate per \$100 of Assessed Value)**

UNAUDITED

FISCAL YEAR ENDED JUNE 30,	SCHOOL DISTRICT DIRECT RATE			OVERLAPPING RATES			TOTAL DIRECT AND OVERLAPPING TAX RATE
	BASIC RATE	GENERAL OBLIGATION DEBT SERVICE	TOTAL DIRECT	TOWNSHIP OF BASS RIVER	PINELANDS REGIONAL RATE	BURLINGTON COUNTY	
2025	N/A	N/A	N/A	N/A	N/A	N/A	N/A
2024	N/A	N/A	N/A	N/A	N/A	N/A	N/A
2023	N/A	N/A	N/A	N/A	N/A	N/A	N/A
2022	0.607	-	0.607	0.366	0.906	0.420	2.299
2021	0.639	-	0.639	0.366	0.813	0.409	2.227
2020	0.677	-	0.677	0.373	0.793	0.403	2.246
2019	0.919	-	0.919	0.347	0.347	0.740	2.353
2018	0.879	-	0.879	0.164	0.699	0.391	2.133
2017	0.867	-	0.867	0.156	0.470	0.693	2.186
2016	0.883	-	0.883	0.156	0.461	0.703	2.203

Source: Municipal Tax Collector, Burlington County Board of Taxation.

**BASS RIVER TOWNSHIP SCHOOL DISTRICT
 PRINCIPAL PROPERTY TAX PAYERS,
 CURRENT YEAR AND NINE YEARS AGO
 UNAUDITED**

Taxpayer	2025		
	TAXABLE ASSESSED VALUE	RANK	% OF TOTAL DISTRICT NET ASSESSED VALUE

DATA NOT AVAILABLE

Total	\$ -	0.000%
-------	------	--------

Taxpayer	2016		
	TAXABLE ASSESSED VALUE	RANK	% OF TOTAL DISTRICT NET ASSESSED VALUE

DATA NOT AVAILABLE

Total	\$ -	-
-------	------	---

Source: Municipal Tax Assessor

**BASS RIVER TOWNSHIP SCHOOL DISTRICT
PROPERTY TAX LEVIES AND COLLECTIONS
LAST TEN FISCAL YEARS
UNAUDITED**

FISCAL YEAR ENDED JUNE 30,	TAXES LEVIED FOR THE FISCAL YEAR	COLLECTED WITHIN THE FISCAL YEAR OF THE LEVY		COLLECTIONS IN SUBSEQUENT YEARS
		AMOUNT	PERCENTAGE OF LEVY	
2025	\$ 1,078,022.00	\$ 1,078,022.00	100.00%	-
2024	1,056,884.00	1,056,884.00	100.00%	-
2023	1,056,884.00	1,056,884.00	100.00%	-
2022	1,106,885.00	1,106,885.00	100.00%	-
2021	1,156,885.00	1,156,885.00	100.00%	-
2020	1,514,402.00	1,514,402.00	100.00%	-
2019	1,484,708.00	1,484,708.00	100.00%	-
2018	1,455,596.00	1,455,596.00	100.00%	-
2017	1,427,055.00	1,427,055.00	100.00%	-
2016	1,346,565.00	1,346,565.00	100.00%	-

Source: District records including the Certificate and Report of School Taxes (A4F form)

a. School taxes are collected by the Municipal Tax Collector. Under New Jersey State Statute, a municipality is required to remit to the school district the entire property tax balance, in the amount voted upon or certified prior to the end of the school year.

Debt Capacity Information

Debt capacity information is intended to assist users in understanding and assessing the School District's debt burden and its ability to issue additional debt. Please refer to the following exhibits for historical view of the School District's outstanding debt and its debt capacity.

This page intentionally left blank

**BASS RIVER TOWNSHIP SCHOOL DISTRICT
RATIOS OF OUTSTANDING DEBT BY TYPE
LAST TEN FISCAL YEARS
UNAUDITED**

FISCAL YEAR ENDED JUNE 30,	GOVERNMENTAL ACTIVITIES			TOTAL DISTRICT	PERCENTAGE OF PERSONAL INCOME PER CAPITA	
	GENERAL OBLIGATION BONDS	FINANCING OBLIGATIONS				
2025	\$ -	\$ -	\$ -	-	N/A	N/A
2024	-	-	-	-	N/A	N/A
2023	-	-	-	-	N/A	N/A
2022	-	283,900.00	283,900.00	283,900.00	N/A	N/A
2021	-	305,300.00	305,300.00	305,300.00	N/A	N/A
2020	-	342,184.56	342,184.56	342,184.56	N/A	67,154
2019	-	414,303.45	414,303.45	414,303.45	N/A	63,528
2018	-	500,104.27	500,104.27	500,104.27	N/A	61,140
2017	-	590,414.00	590,414.00	590,414.00	N/A	59,271
2016	-	241,390.00	241,390.00	241,390.00	N/A	57,583

Note: Details regarding the district's outstanding debt can be found in the notes to the financial statements.
See Exhibit J-14 for personal income and population data.

**BASS RIVER TOWNSHIP SCHOOL DISTRICT
RATIOS OF NET GENERAL BONDED DEBT OUTSTANDING
LAST TEN FISCAL YEARS
UNAUDITED**

FISCAL YEAR ENDED JUNE 30,	ESTIMATED SCHOOL DISTRICT POPULATION	NET ASSESSED VALUATION TAXABLE	NET GENERAL BONDED DEBT OUTSTANDING	PERCENTAGE OF ACTUAL TAXABLE VALUE OF PROPERTY	PER CAPITA
2025	N/A	N/A	\$ -	0.00%	N/A
2024	N/A	N/A	-	0.00%	N/A
2023	N/A	N/A	-	0.00%	N/A
2022	N/A	\$ 174,003,990.00	-	0.00%	N/A
2021	1,358	173,172,996.00	-	0.00%	N/A
2020	1,417	170,776,298.00	-	0.00%	67,154
2019	1,418	170,388,700.00	-	0.00%	63,528
2018	1,422	172,260,300.00	-	0.00%	61,140
2017	1,428	170,483,000.00	-	0.00%	59,271
2016	1,433	159,103,780.00	-	0.00%	57,583

Note: Details regarding the District's outstanding debt can be found in the notes to the financial statements.

See Exhibit J-6 for property tax data.

Population data can be found in Exhibit J-14.

**BASS RIVER TOWNSHIP SCHOOL DISTRICT
RATIOS OF OVERLAPPING GOVERNMENTAL ACTIVITIES DEBT
YEAR ENDED JUNE 30, 2025
UNAUDITED**

GOVERNMENTAL UNIT	DEBT OUTSTANDING	ESTIMATED PERCENTAGE APPLICABLE	SHARE OF OVERLAPPING DEBT
Debt Repaid With Property Taxes:			
Local Municipality	\$ -	0.0%	\$ -
Pinelands Regional School District	-	0.00%	-
County of Burlington	-	0.00%	-
			<hr/>
Subtotal, Overlapping Debt			-
Local School District Direct Debt	-	100.0%	-
			<hr/>
Total Direct & Overlapping Debt			<u>\$ -</u>

Sources: Burlington County Office of the Treasurer, Township of Bass River.

NOTE: Overlapping governments are those that coincide, at least in part, with the geographic boundaries of the District. This schedule estimates the portion of the outstanding debt of those overlapping governments that is borne by the residents and businesses of Bass River. This process recognizes that, when considering the District's ability to issue and repay long-term debt, the entire debt burden borne by the residents and businesses should be taken into account. However this does not imply that every taxpayer is a resident, and therefore responsible for repaying the debt, of each overlapping payment.

For debt repaid with property taxes, the percentage of overlapping debt applicable is estimated using taxable assessed property values. Applicable percentages were estimated by determining the portion of another governmental unit's taxable value that is within the district's boundaries and dividing it by each unit's total taxable value.

BASS RIVER TOWNSHIP SCHOOL DISTRICT
 LEGAL DEBT MARGIN INFORMATION
 LAST TEN FISCAL YEARS
 (DOLLARS IN THOUSANDS)
 UNAUDITED

	FISCAL YEAR									
	2025	2024	2023	2022	2021	2020	2019	2018	2017	2016
Debt Limit	\$ 5,621,272.57	\$ 5,163,033.00	\$ 7,510,876.56	\$ 7,278,866.60	\$ 6,896,721.45	\$ 691,935,436.00	\$ 6,921,115.21	\$ 4,400,623.00	\$ 4,406,656.00	\$ 4,445,108.00
Total Net Debt Applicable to Limit	-	-	-	-	-	-	-	-	-	-
Legal Debt Margin	\$ 5,621,272.57	\$ 5,163,033.00	\$ 7,510,876.56	\$ 7,278,866.60	\$ 6,896,721.45	\$ 691,935,436.00	\$ 6,921,115.21	\$ 4,400,623.00	\$ 4,406,656.00	\$ 4,445,108.00
Total Net Debt Applicable to the Limit as a Percentage of Debt Limit	0.00%	0.00%	0.00%	0.00%	0.00%	0.00%	0.00%	0.00%	0.00%	0.00%

Legal Debt Margin Calculation

	2024	2023	2022
Equalized Valuation Basis	\$ 246,997,741.00	\$ 225,787,922.00	\$ 201,767,045.00
Average Equalized Valuation of Taxable Property	\$ 674,552,708.00	\$ 224,850,902.67	\$ 5,621,272.57
Debt Limit (2.5% of Average Equalization Value)	\$ 5,621,272.57	\$ 5,621,272.57	\$ 5,621,272.57
Legal Debt Margin	\$ 5,621,272.57	\$ 5,621,272.57	\$ 5,621,272.57

Source: Equalized valuation bases were obtained from the Burlington County Board of Taxation

Demographic and Economic Information

Demographic and economic information is intended (1) to assist users in understanding the socioeconomic environment within the School District operates and (2) to provide information that facilitates comparisons of financial statement information over time and among school districts. Please refer to the following exhibits for a historical view of the demographic and economic statistics and factors prevalent in the location in which the School District operates.

This page intentionally left blank

**BASS RIVER TOWNSHIP SCHOOL DISTRICT
DEMOGRAPHIC AND ECONOMIC STATISTICS
LAST TEN FISCAL YEARS
UNAUDITED**

YEAR	POPULATION (a)	PERSONAL INCOME (b)	PER CAPITA PERSONAL INCOME (c)	UNEMPLOYMENT RATE (d)
2025	N/A	N/A	N/A	N/A
2024	N/A	N/A	N/A	N/A
2023	N/A	N/A	N/A	N/A
2022	N/A	N/A	N/A	N/A
2021	1,358	N/A	N/A	9.5%
2020	1,417	\$ 95,157,218	\$ 67,154	12.4%
2019	1,418	90,082,704	63,528	6.8%
2018	1,422	86,941,080	61,140	7.4%
2017	1,428	84,638,988	59,271	7.5%
2016	1,433	82,516,439	57,583	4.2%

Source: U.S. Department of Commerce, Bureau of Economic Analysis. These numbers are estimated by the Bureau and may be revised from year to year.

a Population information provided by the NJ Dept of Labor and Workforce Development. These numbers are estimated by the Department and may be revised from year to year.

b Personal income has been estimated based upon the county population and per capita personal income presented.

c Per capita personal income by county estimated based upon the 2000 Census published by the US Bureau of Economic Analysis.

d Unemployment data provided by the NJ Dept of Labor and Workforce Development. Note that that there is recent revised data for the years 2004 through 2001 due to the new unemployment estimation procedure.

**BASS RIVER TOWNSHIP SCHOOL DISTRICT
 PRINCIPAL EMPLOYERS
 CURRENT YEAR AND NINE YEARS AGO
 UNAUDITED**

	2025	
	EMPLOYEES	PERCENTAGE OF TOTAL EMPLOYMENT
N/A		
	1358	
	1417	
	1418	DATA NOT AVAILABLE
	1422	
	1428	
	1433	
Total	<u>-</u>	<u>0.00%</u>
Total Employment - (Estimated)	<u>-</u>	

Operating Information

Operating information is intended to provide contextual information about the School District's operations and resources to assist readers in using financial statement information to understand and assess the School District's economic condition. Please refer to the following exhibits for a historical view of the factors and statistics pertinent to the School District's operations.

This page intentionally left blank

**BASS RIVER TOWNSHIP SCHOOL DISTRICT
FULL-TIME EQUIVALENT DISTRICT EMPLOYEES BY FUNCTION/PROGRAM
LAST TEN FISCAL YEARS
UNAUDITED**

Function/Program	2025	2024	2023	2022	2021*	2020	2019	2018	2017	2016
Instruction:										
Regular	-	-	-	-	-	12.00	12.25	7.25	14.00	12.00
Special Education	-	-	-	-	-	2.00	3.00	3.00	3.00	4.00
Other Special Instruction	-	-	-	-	-	4.00	4.80	4.75	3.00	3.00
Support Services:										
Student & Instruction Related Services	-	-	-	-	-	-	4.00	2.10	2.00	3.00
General Administration	-	-	-	-	-	2.00	1.50	0.50	1.50	1.50
School Administrative Services	-	-	-	-	-	2.00	1.50	0.75	2.00	2.00
Plant Operations & Maintenance	-	-	-	-	-	2.00	2.00	2.50	2.50	2.50
Other Support Services	-	-	-	-	-	-	-	0.50	1.00	1.00
Total	-	-	-	-	-	24.0	29.1	21.4	29.0	29.0

Source: District Personnel Records

* - Bass River School District became a non-operating school district.

**BASS RIVER TOWNSHIP SCHOOL DISTRICT
OPERATING STATISTICS
LAST TEN FISCAL YEARS
UNAUDITED**

FISCAL YEAR	ENROLLMENT	OPERATING EXPENDITURES (a)	COST PER PUPIL	PERCENTAGE CHANGE	TEACHING STAFF (b)	PUPIL/TEACHER RATIO (d) ELEM	AVERAGE DAILY ENROLLMENT (ADE) (c)	AVERAGE DAILY ATTENDANCE (ADA) (c)	% CHANGE IN AVERAGE DAILY ENROLLMENT	STUDENT ATTENDANCE PERCENTAGE
2024	*	1,502,685.96	N/A	N/A	*	*	*	*	*	*
2023	*	1,502,685.96	N/A	N/A	*	*	*	*	*	*
2022	*	1,373,973.27	N/A	N/A	*	*	*	*	*	*
2021	*	1,622,756.04	N/A	-100.00%	*	*	*	*	*	*
2020	93	2,637,797.88	28,363.42	14.69%	12	1:08	93.3	90.14	-11.40%	96.61%
2019	105	2,596,618.61	24,729.70	-1.61%	12	1:09	105.3	100.03	-4.27%	95.00%
2018	110	2,764,737.00	25,133.97	-6.18%	13	1:11	110.0	103.73	7.84%	94.30%
2017	102	2,732,413.00	26,788.36	3.52%	17	1:6:8	102.0	96.60	-6.85%	94.71%
2016	106	2,742,986.00	25,877.23	7.67%	19	1:7:5	109.5	102.70	-0.54%	93.79%

Sources: District records

* - Bass River School District became a non-operating school district.

Note: Enrollment based on annual October district count from the year prior.

a Operating expenditures equal total expenditures less debt service, capital outlay, and on-behalf TPAF Pension and reimbursed TPAF social security contributions. J-4

b Teaching staff includes only full-time equivalents of certificated staff.

c Average daily enrollment and average daily attendance are obtained from the School Register Summary (SRS).

d Pupil/Teacher ratio was obtained from the Comparative Spending Guide

**BASS RIVER TOWNSHIP SCHOOL DISTRICT
SCHOOL BUILDING INFORMATION
LAST TEN FISCAL YEARS
UNAUDITED**

<u>DISTRICT BUILDINGS</u>	<u>2025</u>	<u>2024</u>	<u>2023</u>	<u>2022</u>	<u>2021 *</u>	<u>2020</u>	<u>2019</u>	<u>2018</u>	<u>2017</u>	<u>2016</u>
Elementary Schools:										
Administration Offices (2008):										
Square Feet	0	0	0	45,299	45,299	45,299	45,299	45,299	45,299	45,299
Capacity	0	0	0	205	205	205	205	205	205	205
Enrollment	0	0	0	0	0	93	105	110	106	110

Number of Schools at June 30, 2025:

- Elementary = 0
- Middle School = 0
- Other = 0

Source: District Facilities Office, District Records

* - Bass River School District became a non-operating school district; students attend Little Egg Harbor School District.

Note: Year of original construction is shown in parentheses. Increases in square footage and capacity are the result of additions. Enrollment is based on the annual October district count.

BASS RIVER TOWNSHIP SCHOOL DISTRICT
 GENERAL FUND
 SCHEDULE OF REQUIRED MAINTENANCE FOR SCHOOL FACILITIES
 LAST TEN FISCAL YEARS
 UNAUDITED

SCHOOL FACILITIES	PROJECT #(s)	2025	2024	2023	2022	2021	2020	2019	2018	2017	2016
Bass River Township Elementary	N/A	\$ -	\$ -	\$ 5,280.73	\$ 96,439.74	\$ 51,912.27	\$ 21,098.45	\$ 29,763.93	\$ 16,004.61	\$ 19,233.00	\$ 14,623.00
Grand Total		\$ -	\$ -	\$ 5,280.73	\$ 96,439.74	\$ 51,912.27	\$ 21,098.45	\$ 29,763.93	\$ 16,004.61	\$ 19,233.00	\$ 14,623.00

Source: District Records

**BASS RIVER TOWNSHIP SCHOOL DISTRICT
INSURANCE SCHEDULE
JUNE 30, 2025
UNAUDITED**

	COVERAGE	DEDUCTIBLE
SCHOOL PACKAGE POLICY (1):		
NJ School Board Association	\$ 350,000.00	
Property-Blanket Building & Contents	5,892,495.00	\$ 1,000.00
Commercial General Liability		
General Aggregate	16,000,000.00	N/A
Products & Completed Operations Aggregate	N/A	N/A
Personal & Advertising Injury	67,154.00	N/A
Each Occurrence	63,528.00	N/A
Fire Damage (Any on Fire)	61,140.00	N/A
Professional Liability	59,271.00	
Coverage A - Each Policy Period	57,583.00	\$10,000/claim
Coverage B - Each Claim	55,925.00	
Coverage C - Each Policy Period	300,000.00	\$10,000/claim
Comprehensive Automobile Liability		
Hired & Non Owned Only	16,000,000.00	N/A
Commercial Crime Policy		
Money-All risk In/Out	25,000.00	N/A
Public Employee Dishonesty	500,000.00	N/A
Forgery & Altercation	100,000.00	N/A
Computer Fraud	100,000.00	N/A
Computer & Scheduled Equipment		
Utica National Ins. Group - Commercial Inland Marine		
Computers	185,000.00	1,000.00
Commercial Articles	Included	
Boiler & Machinery - Hartford Stm. Boiler		
Boiler & Machinery	100,000.00	1,000.00
Business Interruption	Included	12 hours
Property - Blanket Building Contents	5,668,437.00	1,000.00
Commercial General Liability		
Extra Expense	10,000,000.00	1,000.00
Service Interruption	10,000,000.00	24 hours
Accident & Health		
Berkeley Accident & Health LLC		
Accident & Health	N/A	N/A
Accident & Health/Voluntary		
Retained Limit	N/A	N/A
Public Employee's Fidelity Bonds-		
Utica National Ins. Group		
Board Secretary	100,000.00	N/A
Treasurer of School Monies	180,000.00	N/A
Workers Compensation - NJ School Board Association		
Each Accident	2,000,000.00	N/A
Disease - Policy Limit	2,000,000.00	N/A
Disease - Each Employee	2,000,000.00	N/A

Source: District Records

This page intentionally left blank

SINGLE AUDIT SECTION

Fourth Section

This page intentionally left blank

EXHIBIT K-1

**INDEPENDENT AUDITOR'S REPORT ON INTERNAL CONTROL OVER FINANCIAL
REPORTING AND ON COMPLIANCE AND OTHER MATTERS BASED
ON AN AUDIT OF FINANCIAL STATEMENTS PERFORMED IN ACCORDANCE WITH
GOVERNMENT AUDITING STANDARDS**

Honorable President and Members
of the Board of Education
Bass River Township School District
County of Burlington

We have audited, in accordance with the auditing standards generally accepted in the United States of America and the standards applicable to financial audits contained in Government Auditing Standards issued by the Comptroller General of the United States and audit requirements as prescribed by the Office of School Finance, Department of Education, State of New Jersey, the financial statements of the governmental activities, the business-type activities, each major fund and the aggregate remaining fund information of the Bass River Township School District as of and for the year ended June 30, 2025, and the related notes to the financial statements, which collectively comprise the School District's basic financial statements, and have issued our report thereon dated December 1, 2025.

Report on Internal Control Over Financial Reporting

In planning and performing our audit of the financial statements, we considered the Bass River Township School District's internal control over financial reporting (internal control) as a basis for designing audit procedures that are appropriate in the circumstances for the purpose of expressing our opinions on the financial statements, but not for the purpose of expressing an opinion on the effectiveness of the School District's internal control. Accordingly, we do not express an opinion on the effectiveness of the Bass River Township School District's internal control.

A deficiency in internal control exists when the design or operation of a control does not allow management or employees, in the normal course of performing their assigned functions, to prevent, or detect and correct, misstatements on a timely basis. A *material weakness* is a deficiency, or a combination of deficiencies, in internal control, such that there is a reasonable possibility that a material misstatement of the entity's financial statements will not be prevented, or detected and corrected on a timely basis. A *significant deficiency* is a deficiency, or a combination of deficiencies, in internal control that is less severe than a material weakness, yet important enough to merit attention by those charged with governance.

Our consideration of internal control was for the limited purpose described in the first paragraph of this section and was not designed to identify all deficiencies in internal control that might be material weaknesses or significant deficiencies. Given these limitations, during our audit we did not identify any deficiencies in internal control that we consider to be material weaknesses. However, material weaknesses or significant deficiencies may exist that have not been identified.

Report on Compliance and Other Matters

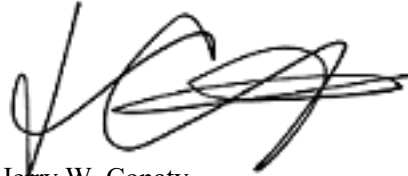
As part of obtaining reasonable assurance about whether the School District's financial statements are free from material misstatement, we performed tests of its compliance with certain provisions of laws, regulations, contracts, and grant agreements, noncompliance with which could have a direct and material effect on the determination of financial statement amounts. However, providing an opinion on compliance with those provisions was not an objective of our audit, and accordingly, we do not express such an opinion. The results of our tests disclosed no instances of noncompliance or other matters that are required to be reported under Government Auditing Standards, and audit requirements as prescribed by the Office of School Finance, Department of Education, State of New Jersey.

Purpose of This Report

The purpose of this report is solely to describe the scope of our testing of internal control and compliance and the results of that testing, and not to provide an opinion on the effectiveness of the School District's internal control or on compliance. This report is an integral part of an audit performed in accordance with Government Auditing Standards and audit requirements as prescribed by the Office of School Finance, Department of Education, State of New Jersey, and federal and state awarding agencies and pass-through entities, in considering the School District's internal control and compliance. Accordingly, this communication is not suitable for any other purpose.

Respectfully Submitted,

HOLMAN FRENIA ALLISON, P.C.



Jerry W. Conaty

Certified Public Accountant

Public School Accountant, No. 2470

Lakewood, New Jersey

December 1, 2025

BASS RIVER TOWNSHIP SCHOOL DISTRICT
SCHEDULE OF EXPENDITURES OF FEDERAL AWARDS
FOR THE FISCAL YEAR ENDED JUNE 30, 2025

FEDERAL GRANTOR PASS-THROUGH GRANTOR PROGRAM TITLE OR CLUSTER	FEDERAL ASSISTANCE LISTING NUMBER	FEDERAL AWARD IDENTIFICATION NUMBER	PASS THROUGH ENTITY IDENTIFYING NUMBER	PROGRAM OR AWARD AMOUNT	GRANT PERIOD	BALANCE JUNE 30, 2024	BUDGETARY EXPENDITURES	PASSED THROUGH TO SUBRECIPIENTS	UNEARNED REVENUE	BALANCE, JUNE 30, 2025 (ACCOUNTS RECEIVABLE)	DUE TO GRANTOR
Total Expenditures of Federal Awards											
						\$ -	\$ -	\$ -	\$ -	\$ -	\$ -

The accompanying Notes to Schedules of Expenditures of Awards and Financial Assistance are an integral part of this schedule

BASS RIVER TOWNSHIP SCHOOL DISTRICT
SCHEDULE OF EXPENDITURES OF STATE FINANCIAL ASSISTANCE
YEAR ENDED JUNE 30, 2025

STATE GRANTOR/ PROGRAM TITLE	GRANT OR STATE PROJECT NUMBER	AWARD AMOUNT	GRANT PERIOD	BALANCE JUNE 30, 2024	CASH RECEIVED	BUDGETARY EXPENDITURES	PASSED THROUGH TO SUBRECIPIENTS	UNEARNED REVENUE	BALANCE, JUNE 30, 2025		MEMO	
									(ACCOUNTS RECEIVABLE)	DUE TO GRANTOR	BUDGETARY RECEIVABLE	CUMULATIVE TOTAL
New Jersey Department of Education:												
General Fund:												
State Aid Public:												
Special Education Categorical Aid	495-034-5120-089	\$ 88,200.00	07/1/24-06/30/25	\$ -	\$ 88,200.00	\$ (88,200.00)	\$ -	\$ -	\$ -	\$ -	\$ 8,820.65	\$ 88,200.00
Security Aid	495-034-5120-084	31,588.00	07/1/24-06/30/25	-	31,588.00	(31,588.00)	-	-	-	-	3,159.03	31,588.00
Stabilized School Budget Aid	495-034-5120-169	170,451.00	07/1/24-06/30/25	-	170,451.00	(170,451.00)	-	-	-	-	-	170,451.00
Equalization Aid	495-034-5120-078	23,130.00	07/1/24-06/30/25	-	23,130.00	(23,130.00)	-	-	-	-	2,313.17	23,130.00
Total State Aid Public				-	313,369.00	(313,369.00)	-	-	-	-	14,292.85	313,369.00
Transportation Aid												
Additional Non-Public Transportation Aid	495-034-5120-014	102,864.00	07/1/24-06/30/25	-	102,864.00	(102,864.00)	-	-	-	-	10,287.15	102,864.00
Additional Non-Public Transportation Aid	495-034-5120-014	4,095.00	07/1/23-06/30/24	(4,095.00)	4,095.00	-	-	-	-	-	-	-
Capital Grant	495-034-5120-014	3,736.00	07/1/24-06/30/25	-	-	(3,736.00)	-	-	(3,736.00)	-	-	3,736.00
	495-034-5120-169	37,000.00	07/1/24-06/30/25	-	37,000.00	(37,000.00)	-	-	-	-	-	37,000.00
Total General Fund				(4,095.00)	457,328.00	(456,969.00)	-	-	(3,736.00)	-	24,580.00	456,969.00
Total State Financial Assistance				\$ (4,095.00)	\$ 457,328.00	\$ (456,969.00)	\$ -	\$ -	\$ (3,736.00)	\$ -	\$ 24,580.00	\$ 456,969.00

The accompanying Notes to Schedules of Expenditures of Awards and Financial Assistance are an integral part of this schedule

BASS RIVER TOWNSHIP SCHOOL DISTRICT
NOTES TO SCHEDULES OF EXPENDITURES OF FEDERAL AWARDS AND STATE
FINANCIAL ASSISTANCE
YEAR ENDED JUNE 30, 2025

Note 1. Basis of Presentation

The accompanying schedules of expenditures of federal awards and state financial assistance present the activity of all federal awards and state financial assistance programs of the Bass River Township School District. The School District is defined in Note 1 of the basic financial statements. The information in these schedules is presented in accordance with the requirements of Title 2 U.S. Code of Federal Regulations (CFR) Part 200, Uniform Administrative Requirements, Cost Principles, and Audit Requirements for Federal Awards (Uniform Guidance) and New Jersey OMB's Circular 15-08, Single Audit Policy for Recipients of Federal Grants, State Grants and State Aid. All federal and state awards received directly from federal and state agencies, as well as federal awards and state financial assistance passed through other government agencies is included on the schedule of expenditures of federal awards and state financial assistance.

Note 2. Summary of Significant Accounting Policies

The accompanying schedules of expenditures of federal awards and state financial assistance are presented using the budgetary basis of accounting with the following exception: programs recorded in the enterprise fund are presented using the accrual basis of accounting and programs recorded in the capital projects fund are presented using the modified accrual basis of accounting. These bases of accounting are described in Note 1 to the School District's basic financial statements. The information in this schedule is presented in accordance with the requirements of Title 2 U.S. Code of Federal Regulations (CFR) Part 200, *Uniform Administrative Requirements, Cost Principles, and Audit Requirements for Federal Awards* and New Jersey OMB's Circular 15-08, *Single Audit Policy for Recipients of Federal Grants, State Grants and State Aid*. Therefore, some amounts presented in this schedule may differ from amounts presented in, or used in the preparation of, the basic financial statements.

The School District did not elect the applicable de minimis indirect cost rate as discussed in 2 CFR 200.414.

**BASS RIVER TOWNSHIP SCHOOL DISTRICT
 NOTES TO SCHEDULES OF EXPENDITURES OF FEDERAL AWARDS AND STATE
 FINANCIAL ASSISTANCE
 YEAR ENDED JUNE 30, 2025 (Continued)**

Note 3. Relationship to Basic Financial Statements

The basic financial statements present the general fund and special revenue fund on a GAAP basis. Budgetary comparison statements or schedules (RSI) are presented for the general fund and special revenue fund to demonstrate finance-related legal compliance in which certain revenue is permitted by law or grant agreement to be recognized in the audit year, whereas for GAAP reporting, revenue is not recognized until the subsequent year or when expenditures have been made.

The general fund is presented in the accompanying schedules on the modified accrual basis with the exception of the revenue recognition of the one or more deferred June state aid payments in the current budget year, which is mandated pursuant to *N.J.S.A.* 18A:22-44.2. For GAAP purposes payments are not recognized until the subsequent budget year due to the state deferral and recording of the one or more June state aid payments in the subsequent year. The special revenue fund is presented in the accompanying schedules on the grant accounting budgetary basis, which recognizes encumbrances as expenditures and also recognizes the related revenues, whereas the GAAP basis does not. The special revenue fund also recognizes the one or more state aid June payments in the current budget year, consistent with *N.J.S.A.* 18A:22-4.2.

The net adjustment to reconcile from the budgetary basis to the GAAP basis is \$37,877.00 for the general fund and \$0.00 for the special revenue fund. See Exhibit C-3 Note A of the basic financial statements, for a reconciliation of the budgetary basis to the modified accrual basis of accounting for the general and special revenue funds. Awards and financial assistance expenditures reported in the School District’s basic financial statements on a GAAP basis are presented as follows:

	<u>Fund</u>	<u>State</u>	<u>Total</u>
General Fund	\$	494,846.00	\$ 494,846.00
Total Awards & Financial Assistance	\$	494,846.00	\$ 494,846.00

Note 4. Relationship to Federal and State Financial Reports

Amounts reported in the accompanying schedules agree with the amounts reported in the related federal and state financial reports.

Note 5. Federal and State Loans Outstanding

The Bass River Township School District had no loan balances outstanding at June 30, 2025.

**BASS RIVER TOWNSHIP SCHOOL DISTRICT
SCHEDULE OF FINDINGS AND QUESTIONED COSTS
YEAR ENDED JUNE 30, 2025**

Section I - Summary of Auditor's Results

Financial Statements

Type of auditor's report issued _____ Unmodified _____

Internal control over financial reporting:

1) Material weakness(es) identified? _____ yes X no

2) Significant deficiency(ies) identified? _____ yes X none reported

Noncompliance material to financial statements noted? _____ yes X no

Federal Awards

SECTION IS N/A - NOT REQUIRED

Internal control over major programs:

1) Material weakness(es) identified? _____ yes _____ no

2) Significant deficiency(ies) identified? _____ yes _____ none reported

Type of auditor's report issued on compliance for major programs _____

Any audit findings disclosed that are required to be reported in accordance with 2 CFR 200 section .516(a) of Uniform Guidance? _____ yes _____ no

Identification of major programs:

<u>Assistance Listing Number(s)</u>	<u>FAIN Number(s)</u>	<u>Name of Federal Program or Cluster</u>
_____	_____	_____
_____	_____	_____
_____	_____	_____
_____	_____	_____
_____	_____	_____
_____	_____	_____

Dollar threshold used to determine Type A programs _____

Auditee qualified as low-risk auditee? _____ yes _____ no

**BASS RIVER TOWNSHIP SCHOOL DISTRICT
SCHEDULE OF FINDINGS AND QUESTIONED COSTS
YEAR ENDED JUNE 30, 2025**

Section I - Summary of Auditor's Results (Continued)

State Financial Assistance

SECTION IS N/A - NOT REQUIRED

Dollar threshold used to determine Type A programs _____

Auditee qualified as low-risk auditee? _____ yes _____ no

Internal control over major programs:

1) Material weakness(es) identified? _____ yes _____ no

2) Significant deficiency(ies) identified? _____ yes _____ none reported

Type of auditor's report issued on compliance for major programs _____

Any audit findings disclosed that are required to be reported in accordance with NJ OMB's Circular 15-08? _____ yes _____ no

Identification of major programs:

State Grant/Project Number(s)

Name of State Program

**BASS RIVER TOWNSHIP SCHOOL DISTRICT
SCHEDULE OF FINDINGS & QUESTIONED COSTS
YEAR ENDED JUNE 30, 2025**

Section II - Financial Statement Findings

This section identifies the significant deficiencies, material weaknesses and instances of noncompliance related to the basic financial statements that are required to be reported in accordance with *Government Auditing Standards* and with audit requirements prescribed by the Division of Administration and Finance, Department of Education, State of New Jersey.

None.

**BASS RIVER TOWNSHIP SCHOOL DISTRICT
SCHEDULE OF FINDINGS & QUESTIONED COSTS
YEAR ENDED JUNE 30, 2025**

Section III - Federal Awards & State Financial Assistance Findings & Questioned Costs

This section identifies the significant deficiencies, material weaknesses and instances of noncompliance, including questioned costs, related to the audit of major federal and state programs, as required by Title 2 U.S. Code of Federal Regulations (CFR) Part 200, Uniform Administrative Requirements, Cost Principals, and Audit Requirements for Federal Awards (Uniform Guidance) and New Jersey OMB's Circular 15-08.

FEDERAL AWARDS

N/A - Federal single audit not required.

STATE FINANCIAL ASSISTANCE

N/A - State single audit not required.

**BASS RIVER TOWNSHIP SCHOOL DISTRICT
SUMMARY SCHEDULE OF PRIOR YEAR AUDIT FINDINGS
AND QUESTIONED COSTS AS PREPARED BY MANAGEMENT
YEAR ENDED JUNE 30, 2025**

This section identifies the status of prior year findings related to the financial statements, federal awards and state financial assistance that are required to be reported in accordance with Government Auditing Standards, Title 2 U.S. Code of Federal Regulations (CFR) Part 200, Uniform Administrative Requirements, Cost Principals, and Audit Requirements for Federal Awards (Uniform Guidance), and New Jersey OMB's Circular 15-08.

Financial Statement Findings

No Prior Year Findings.

Federal Awards

N/A - No Federal Single Audit in prior year.

State Financial Assistance

N/A- No State Single Audit in Prior Year